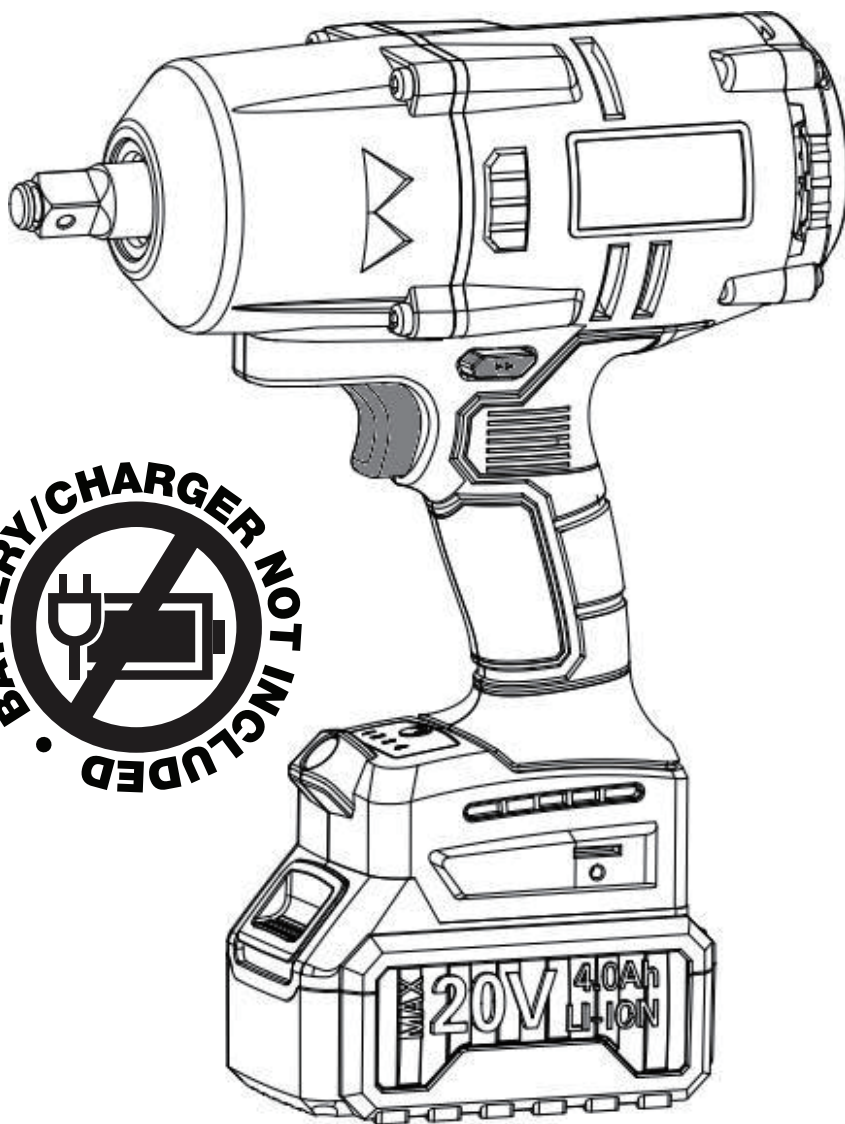


OPERATING INSTRUCTIONS / USER MANUAL



DANGER! Read all safety regulations and instructions. Keep all safety regulations and instructions in a safe place for future use.



2025

E&OE Please Note that details and specifications contained herein, are correct at the time of publishing. Adendorff reserve the right to change specifications at any time without prior notification.

Model: IWRENC-100

CORDLESS IMPACT WRENCH

IMPORTANT SAFETY INFORMATION

Thank you for purchasing this quality product. We want to help you get the best results from your new equipment and to operate it safely.

This manual contains the information on how to do that; please read it carefully. You will need this manual for the safety warnings and precautions, operating, maintenance and cleaning procedures, parts list and assembly diagram. Keep your invoice with this manual. Write the invoice number on the inside of the front cover. Keep this manual and invoice in a safe and dry place for future reference.

This manual should be considered a permanent part of the product and should remain with it if it is resold.

SAFETY PRECAUTIONS

Your safety and the safety of those around you are of utmost importance. This manual includes essential safety messages—please read them carefully to ensure proper use and avoid potential hazards.

The failure to follow instructions may result in damage to your power tool, other property, or the environment.

Product Information & Disclaimer

All details and specifications provided in this publication are based on the latest available product information at the time of printing.

We reserve the right to make updates at any time without prior notice or obligation.

Reproduction of any part of this manual is prohibited without written permission.

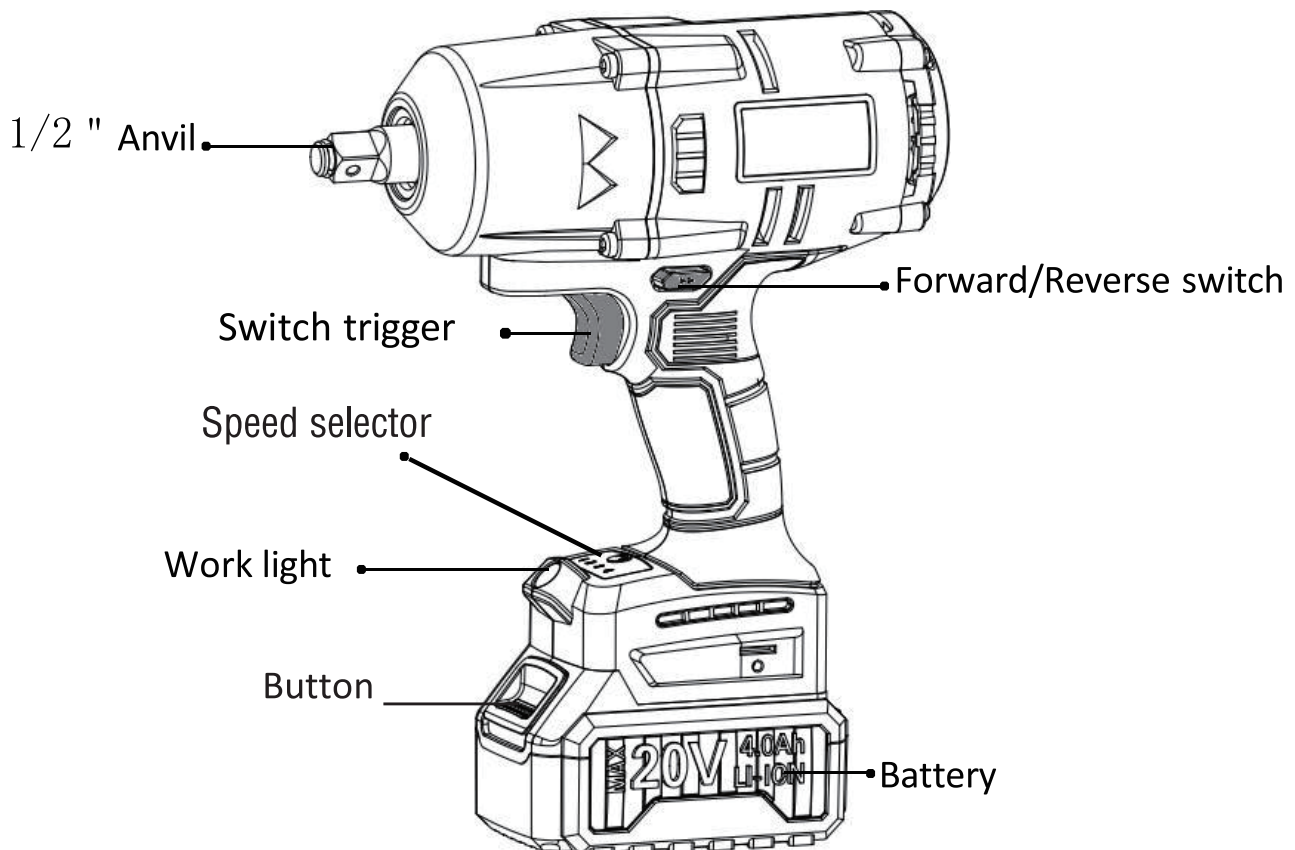
By following these safety guidelines, you can ensure the proper use of your equipment while protecting yourself, others, and your surroundings.

TECHNICAL SPECIFICATIONS

MODEL	IWRENC-100
DRIVE SIZE:	1/2"
BATTERY VOLTAGE:	DC 20V
IMPACT RATE:	0 - 1800 / 0 - 2400 / 0 - 3000BPM
NO-LOAD RPM:	0 - 1000 / 0 - 1400 / 0 - 1800RPM
MAX TORQUE:	1000Nm
WEIGHT:	2.78kg
INCLUDES:	1 Piece Belt Buckle
	1 Piece Screw

Please note that the accessories shown in this manual may either be included with the unit upon purchase or may not be available for sale or included at all. Additionally, certain key features depicted may not be standard. This manual is intended for reference purposes only.

PART LIST



GENERAL POWER TOOL SAFETY RULES

WARNING!

Read all safety warnings and instructions carefully. Failure to follow these warnings may result in electric shock, fire, or serious injury. Keep all warnings and instructions for future reference. The term “power tool” in these warnings applies to both mains-operated (corded) and battery-operated (cordless) tools.

WORK AREA SAFETY

- Keep the work area clean and well-lit. Cluttered or dark areas increase the risk of accidents.
- Do not operate power tools in explosive environments, such as areas containing flammable liquids, gases, or dust. Power tools create sparks that can ignite fumes or dust particles.
- Keep children and bystanders at a safe distance while operating a power tool. Distractions can lead to a loss of control.

ELECTRICAL SAFETY

- Power tool plugs must match the outlet. Never modify a plug in any way or use an adapter with grounded (earthed) power tools. Using unmodified plugs with matching outlets reduces the risk of electric shock.
- Avoid contact with grounded surfaces, such as pipes, radiators, stoves, and refrigerators. If your body is grounded, the risk of electric shock increases.
- Do not expose power tools to rain or wet conditions. Water entering a power tool increases the risk of electric shock.
- Do not misuse the power cord. Never use the cord for carrying, pulling, or unplugging the tool. Keep cords away from heat, oil, sharp edges, and moving parts. Damaged or tangled cords increase the risk of electric shock.
- When using a power tool outdoors, always use an extension cord rated for outdoor use. Use of a cord rated for outdoor use reduces the risk of electric shock.
- If operating a power tool in a damp location is unavoidable, use a Ground Fault Circuit Interrupter (GFCI) protected supply. Use of a GFCI reduces the risk of electric shock.

PERSONAL SAFETY

- Stay alert, watch what you are doing, and use common sense when operating a power tool. Do not use a power tool while you are tired or under the influence of drugs, alcohol, or medication. A moment of inattention while operating power tools may result in serious personal injury.
- Use personal protective equipment. Always wear eye protection. Protective equipment, such as dust masks, non-skid safety shoes, hard hats, or hearing protection, should be used in appropriate conditions to reduce personal injuries.
- Prevent unintentional starting. Ensure the switch is in the off position before connecting to a power source and/or battery pack, picking up, or carrying the tool. Carrying power tools with your finger on the switch or energizing tools that have the switch on invites accidents.
- Remove any adjusting key or wrench before turning on the power tool. A wrench or key left attached to a rotating part of the power tool may result in personal injury.
- Do not overreach. Keep proper footing and balance at all times. This enables better control of the power tool in unexpected situations.
- Dress properly. Do not wear loose clothing or jewelry. Keep your hair, clothing, and gloves away from moving parts. Loose clothes, jewelry, or long hair can be caught in moving parts.

- If devices are provided for the connection of dust extraction and collection facilities, ensure they are properly connected and used. The use of dust collection can reduce dust-related hazards.

POWER TOOL USE AND CARE

- Do not force the power tool. Use the correct power tool for your application. The correct power tool will do the job better and safer at the rate for which it was designed.
- Do not use the power tool if the switch does not turn it on and off. Any power tool that cannot be controlled with the switch is dangerous and must be repaired.
- Disconnect the plug from the power source and/or the battery pack from the power tool before making any adjustments, changing accessories, or storing power tools. Such preventive safety measures reduce the risk of starting the power tool accidentally.
- Store idle power tools out of the reach of children and do not allow persons unfamiliar with the power tool or these instructions to operate the power tool. Power tools are dangerous in the hands of untrained users.
- Maintain power tools. Check for misalignment or binding of moving parts, breakage of parts, and any other condition that may affect the power tool's operation. If damaged, have the power tool repaired before use. Many accidents are caused by poorly maintained power tools.
- Keep cutting tools sharp and clean. Properly maintained cutting tools with sharp cutting edges are less likely to bind and are easier to control.
- Use the power tool, accessories, and tool bits, etc., in accordance with these instructions, taking into account the working conditions and the work to be performed. Use of the power tool for operations different from those intended could result in a hazardous situation.

BATTERY TOOL USE AND CARE

- Recharge only with the charger specified by the manufacturer. A charger that is suitable for one type of battery pack may create a risk of fire when used with another battery pack.
- Use power tools only with specifically designated battery packs. Use of any other battery packs may create a risk of injury and fire.
- When the battery pack is not in use, keep it away from other metal objects, like paper clips, coins, keys, nails, screws, or other small metal objects that can make a connection from one terminal to another. Shorting the battery terminals together may cause burns or a fire.
- Under abusive conditions, liquid may be ejected from the battery; avoid contact. If contact accidentally occurs, flush with water. If liquid contacts eyes, additionally seek medical help. Liquid ejected from the battery may cause irritation or burns.

SERVICE

Have the power tool serviced by a qualified repair person using only identical replacement parts. This will ensure that the safety of the power tool is maintained.
Follow instructions for lubricating and changing accessories.
Keep handles dry, clean, and free from oil and grease.

IMPACT WRENCH SAFETY WARNINGS

WARNING!

- **Hold power tool by insulated gripping surfaces** when performing an operation where the fastener may contact hidden wiring. Fastener contacting a “live” wire may make exposed metal parts of the power tool “live” and could give the operator an electric shock.
- **Know the power tool.** Read the operator’s manual carefully. Learn its applications and limitations, as well as the specific potential hazards related to this power tool. Following this rule will reduce the risk of electric shock, fire, or serious injury.
- **Always wear eye protection with side shields** marked to comply with ANSI Z87.1 when assembling parts, operating the tool, or performing maintenance. Following this rule will reduce the risk of serious personal injury.
- **Protect lungs.** Wear a face or dust mask if the operation is dusty. Following this rule will reduce the risk of serious personal injury.
- **Protect hearing.** Wear hearing protection during extended periods of operation. Following this rule will reduce the risk of serious personal injury.
- **Battery tools do not have to be plugged into an electrical outlet;** therefore, they are always in operating condition. Be aware of possible hazards when not using the battery tool or when changing accessories. Following this rule will reduce the risk of electric shock, fire, or serious injury.
- **Do not place battery tools or their batteries near fire or heat.** This will reduce the risk of explosion and possibly injury.
- **Do not crush, drop, or damage the battery pack.** Do not use a battery pack or charger that has been dropped or received a sharp blow. A damaged battery is subject to explosion. Properly dispose of a dropped or damaged battery immediately.
- **Batteries can explode in the presence of a source of ignition, such as a pilot light.** To reduce the risk of serious personal injury, never use any cordless product in the presence of open flame. An exploded battery can propel debris and chemicals. If exposed, flush with water immediately.
- **Do not charge battery tools in a damp or wet location.** Do not use, store, or charge battery packs or products in locations where the temperature is less than 50°F or more than 100°F. Do not store outside or in vehicles.
- **Under extreme usage or temperature conditions, battery leakage may occur.** If liquid comes in contact with skin, wash immediately with soap and water. If liquid gets into eyes, flush them with clean water for at least 10 minutes, then seek immediate medical attention. Following this rule will reduce the risk of serious personal injury.
- **Save these instructions.** Refer to them frequently and use them to instruct others who may use this tool. If someone is loaned this tool, loan them these instructions also.

WARNING!

- **Do not let comfort or familiarity with the product** (gained from repeated use) replace strict adherence to safety rules for the subject product. **Misuse or failure to follow the safety rules** stated in this instruction manual may cause serious personal injury.

IMPORTANT SAFETY INSTRUCTIONS FOR BATTERY CARTRIDGE

- **Read all instructions and cautionary markings.** Before using the battery cartridge, carefully review the instructions and safety warnings provided for the:

Battery charger	Battery	Product using the battery
-----------------	---------	---------------------------
- **Do not disassemble the battery cartridge.** Disassembly can result in safety hazards or damage.
- **Discontinue use if operating time shortens significantly.** If the battery's operating time becomes excessively shorter, stop using it immediately. Continued operation may lead to overheating, burns, or even an explosion.
- **Handle electrolyte exposure with care.** If electrolyte comes into contact with your eyes:
 - Rinse them thoroughly with clear water for at least 10 minutes.
 - Seek medical attention immediately. Electrolyte can cause severe irritation or potential loss of eyesight.

DO NOT SHORT THE BATTERY CARTRIDGE

- **Avoid contact with terminals.** Do not touch the terminals of the battery cartridge with any conductive material.
- **Store the battery safely.** Do not store the battery cartridge in containers with other metal objects, such as nails, coins, or screws, to prevent accidental short circuits.
- **Protect from moisture.** Keep the battery cartridge away from water or rain. A short circuit caused by exposure to moisture can result in a large current flow, overheating, burns, or even battery failure.
- **Store in proper conditions.** Do not store the tool or battery cartridge in locations where the temperature may exceed 50°C (122°F).
- **Do not incinerate.** Never burn the battery cartridge, even if it is severely damaged or completely worn out. Incineration can cause the battery to explode.
- **Handle with care.** Avoid dropping or striking the battery cartridge to prevent internal damage.
- **Inspect before use.** Do not use a damaged battery cartridge under any circumstances.

TIPS FOR MAINTAINING MAXIMUM BATTERY LIFE

- **Charge before complete discharge.** Stop using the tool and recharge the battery cartridge as soon as reduced power is noticed. Avoid fully depleting the battery to prolong its lifespan.
- **Do not overcharge.** Avoid recharging a fully charged battery cartridge. Overcharging can reduce the battery's service life.
- **Charge within the recommended temperature range.** Ensure the battery cartridge is charged in an environment with a temperature between 10°C - 40°C (50°F - 104°F). Allow the battery cartridge to cool down if it is hot before recharging.

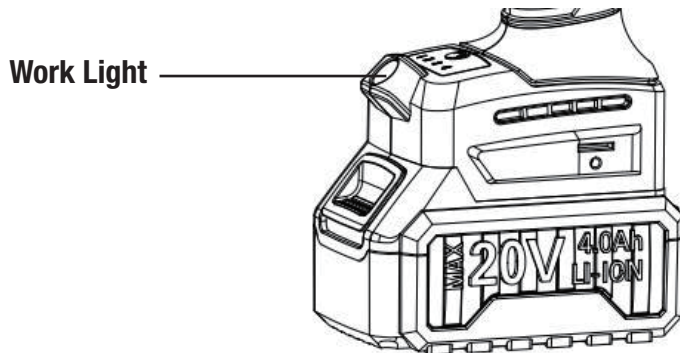
IMPORTANT CHARGING NOTES

- **Do not store in locations where the temperature may exceed 40°C:** Ensure that the tool is stored in a cool, dry place.
- **Charge only at ambient temperatures between 4°C and 40°C:** Charging outside this range can cause damage to the battery.
- **Charge only using the charger provided with the tool:** Other chargers may use different amperages that can damage or destroy the battery and/or tool.
- **Unplug charger before attempting to clean:** Always unplug the charger before cleaning to prevent electric shock or damage to the charger.
- **Do not immerse the charger in water or any other liquid:** Avoid getting the charger wet to prevent electric shock or damage.

LIGHTING UP THE FRONT LAMP

CAUTION:

- Do not look directly at the light or the source of light.
- To light up the lamp, pull the switch trigger. The lamp remains lit while the switch trigger is pulled.



NOTE:

Use a dry cloth to wipe dirt off the lens of the lamp. Be careful not to scratch the lens, as this may lower illumination.

REVERSING SWITCH ACTION

This tool has a reversing switch to change the direction of rotation.

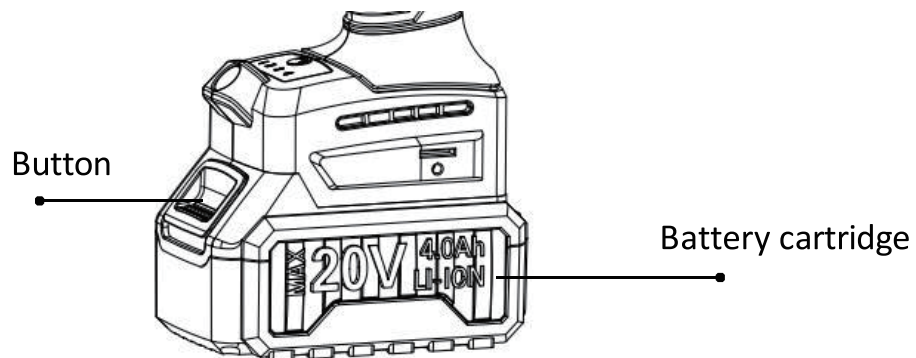
For clockwise rotation: Depress the reversing switch lever from the Right side.

For counterclockwise rotation: Depress the reversing switch lever from the Left side.

Neutral position: When the reversing switch lever is in the neutral position, the switch trigger is locked and cannot be pulled.

INSTALLING OR REMOVING BATTERY CARTRIDGE

- **To remove the battery cartridge:** Slide the red button on the front of the cartridge and carefully withdraw it from the tool.
- **To insert the battery cartridge:** Align the tongue of the battery cartridge with the groove in the tool's housing. Slide the cartridge into place, ensuring it is inserted all the way until it locks in with a distinct click.
- **Avoid using force:** If the battery cartridge does not slide in easily, it is not aligned correctly. Check the alignment and try again.



BATTERY CHARGER OPERATION

Power off before connecting. Ensure the power source switch is turned **OFF** before plugging in the battery charger.

Review the instruction manual. Familiarize yourself with the entire manual before beginning any operation.

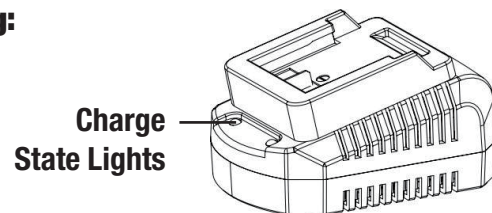
Insert the battery correctly. Align the terminals on the battery with those on the charger and slide the battery into place. It will lock securely with an audible click!

Plug in the battery charger then turn **ON** the power source

The charge state lights will indicate the following:

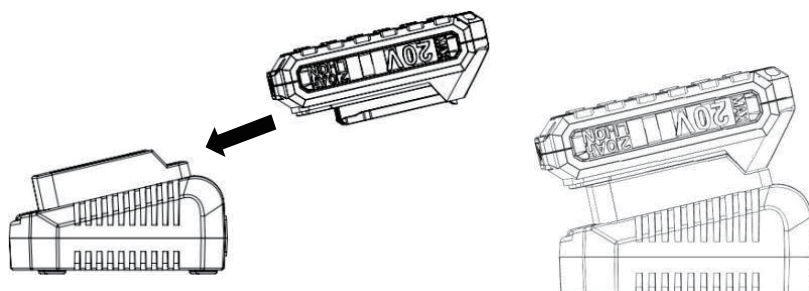
SOLID RED = Charging

SOLID GREEN = Fully Charged



NOTE:

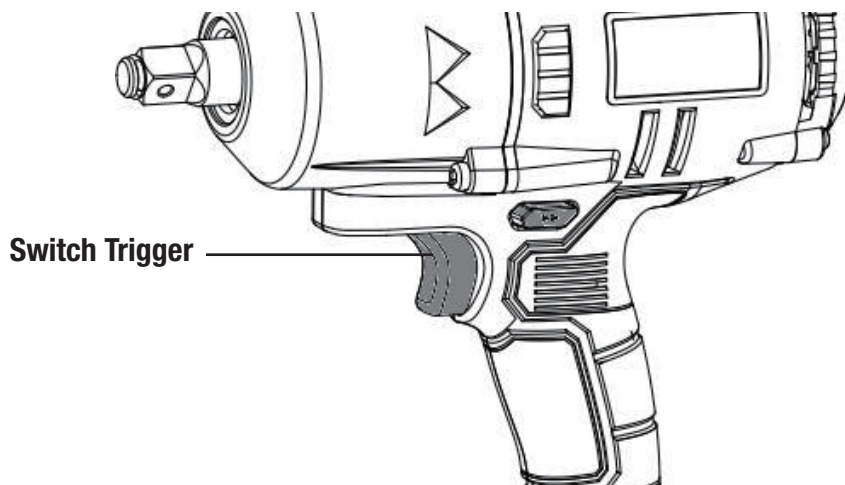
To remove the battery: Press the **Battery Release Button** while gently pulling the battery away from the charger.



SWITCH ACTION

CAUTION:

- **Check the switch trigger.** Before inserting the battery cartridge into the tool, ensure the switch trigger functions correctly and returns to the **OFF** position when released.
- **Verify rotation direction.** Always confirm the tool's direction of rotation before beginning operation.
- **Use the reversing switch correctly.** Only activate the reversing switch. After the tool has come to a complete stop, changing the direction while the tool is running may cause damage.
- **Set to neutral when idle.** When the tool is not in use, always place the reversing switch lever in the neutral position to prevent accidental activation.



- **Switch off the tool.** Before changing the speed, ensure the tool is turned off.
- **Adjust the speed change lever:**
 - Slide the lever to the «2» side for high speed.
 - Slide the lever to the «1» side for low speed.
- **Confirm the position:** Ensure the speed change lever is fully set to the desired position before resuming operation.
- **Use the appropriate speed:** Select the speed setting that best suits the specific requirements of your task.

APPLICATIONS

Tightening and loosening nuts and bolts using an impact socket.

VARIABLE SPEED SWITCH TRIGGER

- The variable speed switch trigger delivers higher speed with increased trigger pressure and lower speed with decreased trigger pressure.
- To turn the tool ON, depress the switch trigger. To turn it OFF, release the switch trigger and allow the anvil to come to a complete stop.

NOTE

- A whistling or ringing noise coming from the switch during use is a normal part of the switch function.
- Running at low speeds under constant usage may cause the tool to become overheated. If this occurs, cool the tool by running it without a load and at full speed.

DIRECTION OF ROTATION SELECTOR (FORWARD/REVERSE/CENTER LOCK)

- To lock the switch trigger and prevent accidental starting, set the direction of rotation selector to the **OFF (center lock)** position.
- Set the selector to the **left** of the switch trigger for forward operation.
- Set the selector to the **right** of the switch trigger for reverse operation.

NOTE

- The tool will not run unless the direction of rotation selector is pushed fully to the left or right.
- To prevent gear damage, always allow the anvil to come to a complete stop before changing the direction of rotation.

WARNING

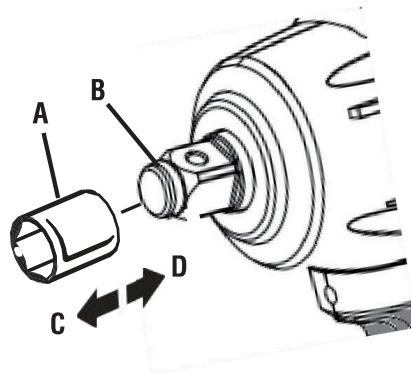
- Battery tools are always in operating condition. Lock the switch when not in use or carrying at the side, when installing or removing the battery pack, and when not in use or carrying at your side, when in-stalling or removing the battery pack, and when installing or removing sockets.

INSTALLING OR REMOVING SOCKETS

Use only sockets designed for impact wrenches. Always select the correct size impact socket for nuts and bolts.

PROCEDURE:

- Remove the battery pack.
- Push the socket onto the anvil until the detent pin locks it into place.
- To remove the socket, pull it away from the anvil.



CAUTION

Using the wrong size socket may damage the nut or bolt and cause the fastening torque to be inaccurate or inconsistent. Always ensure the correct socket size is used to prevent damage and ensure proper torque application.

CHANGE APPLICATION MODE CHANGE THE IMPACT FORCE

- You can change the impact force by selecting from three levels: **Min (1)**, **Mid (2)**, and **Max (3)**. This allows you to choose the most suitable fastening mode for the task at hand.
- Each time the button is pressed, the level of impact force will change accordingly.
- The impact force can be adjusted within about one minute after releasing the switch trigger.

NOTE

Make sure to select the appropriate level of impact force for the specific application to ensure effective and safe use.

CAUTION:

- **Check the switch trigger.** Before inserting the battery cartridge into the tool, ensure the switch trigger functions correctly and returns to the **OFF** position when released.
- **Verify rotation direction.** Always confirm the tool's direction of rotation before beginning operation.
- **Use the reversing switch correctly.** Only activate the reversing switch. After the tool has come to a complete stop, changing the direction while the tool is running may cause damage.
- **Set to neutral when idle.** When the tool is not in use, always place the reversing switch lever in the neutral position to prevent accidental activation.

SETTINGS	SPEED (RPM)	DESCRIPTION
Min (1)	0-1,000	Tighten with gentle force to avoid damaging threads. This is ideal for precision tightening with minimal force
Mid (2)	0-1,400	Tighten with more force, but not at the maximum speed. This is suitable for general tightening tasks.
Max (3)	0-1,800	Tighten with maximum force and speed. This is used for fastener situations requiring a high level of torque and speed.
Auto Stop Mode	0-1,800	Rotate counterclockwise and press the button to activate this mode. When the red light is on, the tool helps prevent bolts or nuts from falling off by automatically stopping or slowing down once the bolt/nut is fully loosened. To deactivate, rotate counterclockwise and press the button again. When all the lights are turned off, the tool will continue to work until the switch trigger is released.

- When the red light is on, the tool helps prevent bolts or nuts from falling off by automatically stopping or slowing down once the bolt/nut is fully loosened.
- To deactivate, rotate counterclockwise and press the button again. When all the lights are turned off, the tool will continue to work until the switch trigger is released.

Note: Choose the appropriate mode based on the task to ensure efficient and safe use.

WARNING

- **Changing Speeds:**
Never change the speed while the tool is running. Changing speeds while the tool is in operation may cause serious damage to the internal components.
- **Indicator Light Activation:**
When no indicator light is visible on the panel, pull the switch trigger once, then press the button to activate the speed settings and indicator lights.
- **Battery Power Save Mode:**
When the tool is turned off to conserve battery power, all the indicator lights on the switch panel will go out. To reactivate, simply press and hold the switch trigger again to bring the tool back to operational mode.

OPERATING THE IMPACT WRENCH

CAUTION

- **Hot Metal Surface Warning:**
The metal surface of the tool may become hot during use. To avoid possible burn injuries, refrain from touching the hot parts of the tool.
- **Determining Proper Fastening Torque:**
The correct fastening torque depends on several factors such as the type of bolt, bolt size, and material of the workpiece. It is recommended to conduct a test operation to determine the appropriate fastening time for the nut or bolt being worked with.
 - Hold the tool straight and aligned with the nut or bolt.
 - Depress the switch to apply the desired fastening torque for the required time.
 - Afterward, check the torque with a torque wrench to ensure accuracy.

WARNING

Avoid Lug Nut Installation Without Torque Limiting Device:

Do not use this tool for installing lug nuts on wheels without a torque-limiting device. Using the tool without this device could result in damaged or broken lug nuts.

IMPACT TIME

- **Torque Variability:**
Many variables affect the available torque for a fastener, including the type of fastener, material, and condition. As a general guideline, the optimum impact time for securing a fastener is approximately 6 seconds.
- **Impacting with Universal Joints or Extension Bars:**
Using a universal joint or extension bar can reduce the fastening force of the impact wrench. This will likely result in a longer fastening time, as the force applied to the fastener is diminished.
- **Avoid Over-Impacting:**
Once the head of a nut or bolt has seated, additional impacting can cause unnecessary damage. Over-impacting may lead to shearing of bolts, nuts, or sockets, and could even tear into wood or other materials, leading to potential workpiece damage.
- **Always ensure that the correct amount of impact force is applied and avoid excessive use to preserve tool and workpiece integrity.**

OPERATION

CAUTION:

- **Ensure secure placement:** Always insert the battery cartridge fully until it locks firmly into place.
- **Avoid improper installation:** If the cartridge is not securely locked, it may accidentally fall out of the tool, posing a risk of injury to you or others nearby.
- **Maintain control:** Hold the tool firmly with one hand on the grip and the other hand supporting the bottom of the battery cartridge to manage twisting action during operation.

GENERAL INSPECTION

- **BEFORE EACH USE:**
Inspect the general condition of the tool thoroughly. Check for:
 - Leaking, swollen, or cracked battery pack.
 - Loose hardware.
 - Misalignment or binding of moving parts.
 - Cracked or broken parts.
 - Any other condition that may compromise safe operation.

MAINTENANCE

CAUTION:

- **Ensure safety before maintenance:** Always switch off the tool and remove the battery cartridge before performing any inspection or maintenance.
- **Avoid harmful substances:** Do not use petrol, diesel, benzene, thinner, alcohol, or similar substances for cleaning. These chemicals can cause discoloration, deformation, or cracks in the tool's materials.

NOTE:

- **Authorized repairs only:** To ensure product safety and reliability, all repairs, maintenance, or adjustments should be performed exclusively by Adendorff Machinery Mart Authorized Service Centers.
- **Use genuine parts:** Always use Adendorff Machinery Mart-approved replacement parts to maintain the tool's performance and warranty coverage.

STORAGE

- **Keep the tool stored in a dry, level area,** away from dampness, moisture, and rainfall.
- **Allow the tool to cool down completely before storing.**
- **Ensure the tool is clean and dry before storage.**
- **Store the tool in a position where it cannot be accidentally stepped on or moved,** especially to reach higher items.

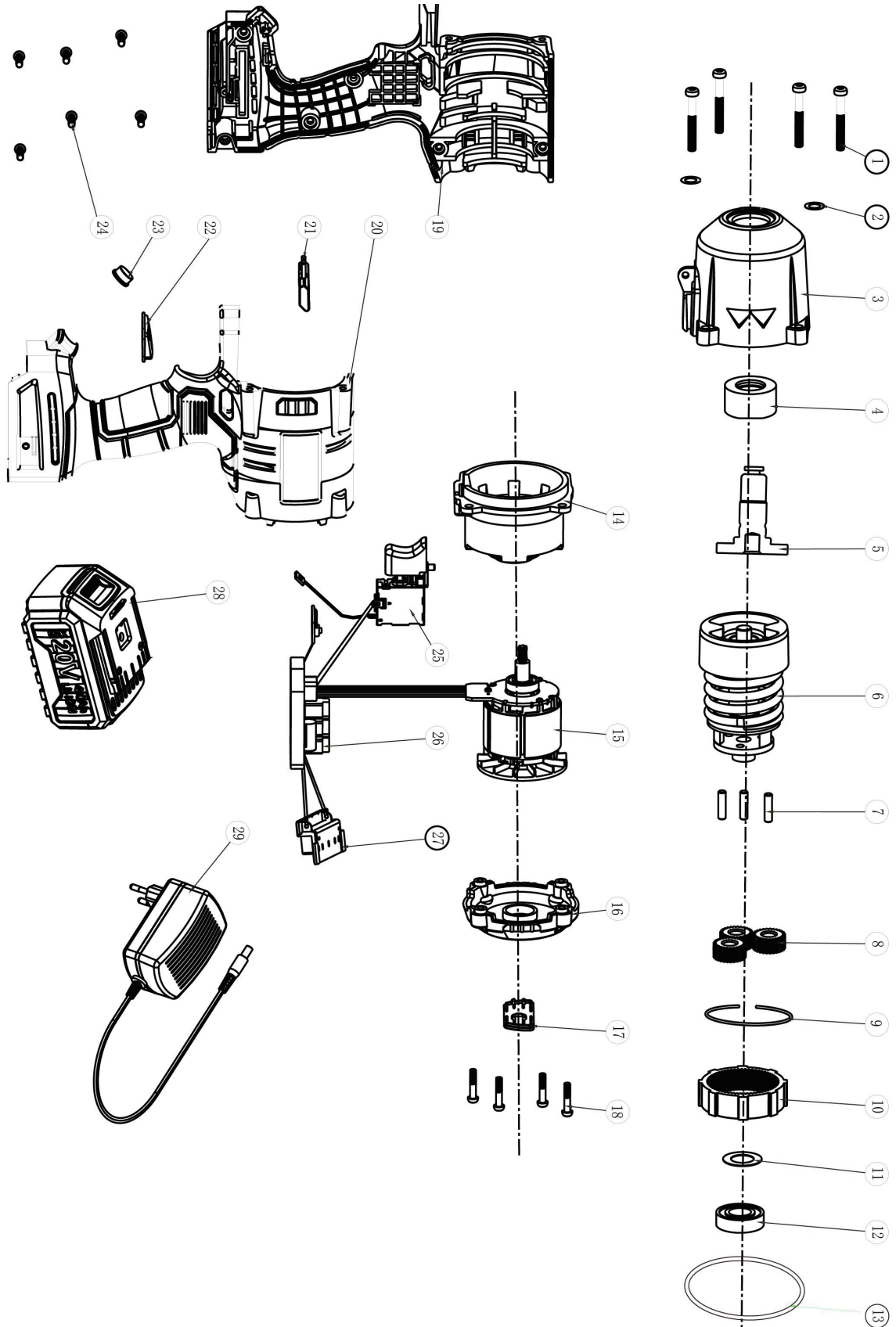
DO NOT:

- **Do not store the tool near an ignition source,** such as a wood stove, gas or electric heater, or any appliance with a pilot light.
- **Do not stack heavy or other items on top of the tool during storage.**

IMPORTANT:

- **Store the tool out of reach of children or individuals unfamiliar with its operation.**
- **Avoid direct sunlight or extreme temperatures. Store the tool indoors or in a safe, frost-free area**

PARTS LIST IWRENC-100



PARTS LIST IWRENC-100

No.	Description
1	Hex Tapping Screw
2	Spring Washer
3	Gear Box
4	Shaft Sleeve
5	Output Shaft
6	Impacting Block Set
7	Pin
8	Planet Gear
9	Wire Washer
10	Annular Gear
11	Washer
12	Deep Groove Ball Bearing
13	O-Ring
14	Bearing Housing
15	Brushless Motor
16	Motor Cover
17	Cover
18	Hex Tapping Screw
19	Machine Right Shell
20	Machine Left Shell
21	Reversing Switch
22	Variable-Speed Cover
23	Led Light
24	Tapping Screw
25	Switch
26	PCB
27	Pinboard
28	Battery Cell (Sold Separately)
29	Charger / Adaptor (Sold Separately)

WARRANTY TERMS & CONDITIONS

WARRANTY PERIOD

- This product is warranted for 12 months from the date of purchase by the first user.

COVERAGE

- The warranty covers all material or production flaws, with exceptions:
- Batteries and chargers
- Parts subject to normal wear (e.g., bearings, brushes, cables, plugs)
- Accessories (e.g., drill bits, saw blades)

EXCLUSIONS

The warranty does not cover damage or defects from:

- Maltreatment, accidents, or alterations
- Inappropriate or negligent use of the tool
- Overloading, fluid permeation, excessive dust, or intentional damage
- Non-compliance with manual instructions, inexperienced assembly, lightning, or incorrect voltage

LIABILITY

- Adendorff Machinery Mart disclaims liability for bodily injury resulting from improper tool use.

REPAIRS

- Warranty repairs must be conducted by an authorized Adendorff Machinery Mart repair center. All stores have in-house service technicians.
- The product warranty will remain in place with repairs performed by Adendorff Machinery Mart in-store technical services and companies approved by Adendorff Machinery Mart.

TRANSPORTATION COSTS

- Transportation costs for service are the customer's responsibility unless otherwise agreed in writing.

WARRANTY CLAIMS

- All Warranty claims do not extend or restart the warranty period.
- Claims may be rejected if purchase cannot be verified or if product maintenance is found to be lacking.
- A 3-month (Three Months) warranty applies to any repairs performed.

MAINTENANCE AND PROOF OF PURCHASE

- Maintain the product as instructed (e.g., clean ventilation slots, service carbon brushes regularly).
- Retain the purchase receipt as proof of purchase date.

RETURN CONDITIONS

- Return the product intact, in clean condition, and in its original blow-molded case (if applicable), along with proof of purchase.

For full warranty details, visit www.adendorff.co.za. For assistance, contact the national call centre at 011 434 7000.



 **Kinway**

Supplied By

Adendorff
machinery mart