



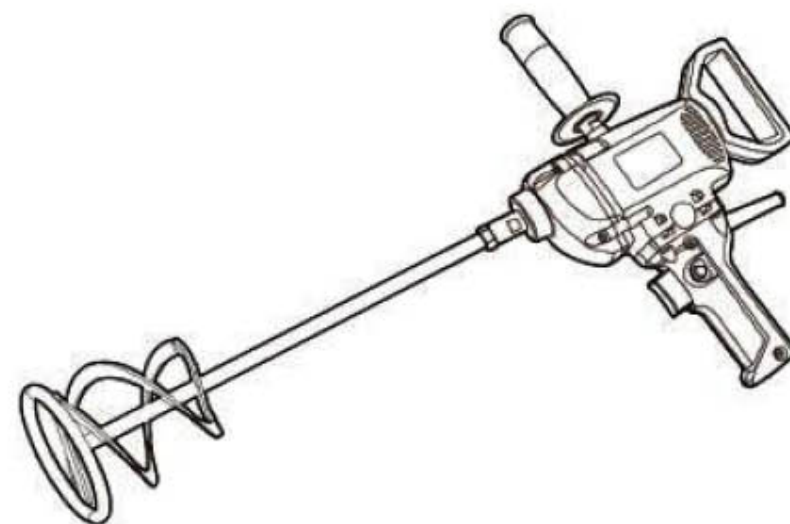
www.adendorff.co.za

SMIXER-001

CORDLESS ELECTRIC MIXER



ORIGINAL OPERATING INSTRUCTIONS



DANGER! Read all safety regulations and instructions.
Keep all safety regulations and instructions in a safe place for future use.



www.adendorff.co.za

EMDE. Please Note that details and specifications contained therein are correct at the time of publishing. Adendorff reserves the right to change specifications at any time without prior notice.

COPYRIGHT ADENDORFF MACHINERY MART

GENERAL POWER TOOL SAFETY WARNINGS

(For All Power Tools)

⚠ WARNING! Read and understand all instructions. *Failure to follow all instructions listed below may result in electric shock, fire and/or serious personal injury.*

Save all warnings and instructions for future reference.

The term “power tool” in the warnings refers to your mains-operated (corded) power tool or battery-operated (cordless) power tool.

Work Area Safety

1. Keep work area clean and well lit. *Cluttered or dark areas invite accidents.*
2. Do not operate power tools in explosive atmospheres, such as in the presence of flammable liquids, gases, or dust. *Power tools create sparks which may ignite the dust or fumes.*
3. Keep children and bystanders away while operating a power tool. *Distractions can cause you to lose control.*

Electrical Safety

4. Power tool plugs must match the outlet. Never modify the plug in anyway. Do not use any adapter plugs with earthed (grounded) power tools. *Unmodified plugs and matching outlets will reduce risk of electric shock.*
5. Avoid body contact with earthed or grounded surfaces, such as pipes, radiators, ranges and refrigerators. *There is an increased risk of electric shock if your body is earthed or grounded.*
6. Do not expose power tools to rain or wet conditions. *Water entering a power tool will increase the risk of electric shock.*
7. Do not abuse the cord. Never use the cord for carrying, pulling or unplugging the power tool. Keep cord away from heat, oil, sharp edges or moving parts. *Damaged or entangled cords increase the risk of electric shock.*
8. When operating a power tool outdoors, use an extension cord suitable for outdoor use. *Use of a cord suitable for outdoor use reduces the risk of electric shock.*
9. If operating a power in a damp location is unavoidable, use a residual current device (RCD)

protected supply. *Use of an RCD reduces the risk of electric shock.*

NOTE: The term “residual current device (RCD)” may be replaced by the term “ground fault circuit interrupter (GFCI)” or “earth leakage circuit breaker (ELCB)”.

Personal Safety

10. Stay alert, watch what you are doing and use common sense when operating a power tool. Do not use a power tool while you are tired or under the influence of drugs, alcohol, or medication. *A moment of inattention while operating power tools may result in serious personal injury.*
11. Use personal protective equipment. Always wear eye protection. *Protective equipment such as dust mask, non-skid safety shoes, hard hat, or hearing protection used for appropriate conditions will reduce personal injuries.*
12. Prevent unintentional starting. Ensure the switch is in the off-position before connecting to power source and /or battery pack, picking up or carrying the tool. *Carrying power tools with your finger on the switch or energising power tools that have the switch on invites accidents.*
13. Remove any adjusting key or wrench before turning the tool on. *A wrench or a key left attached to a rotating part of the power tool may result in personal injury.*
14. Do not overreach. Keep proper footing and balance at all times. *This enables better control of the power tool in unexpected situations.*
15. Dress properly. Do not wear loose clothing or jewellery. Keep your hair, clothing, and gloves away from moving parts. *Loose clothes, jewellery or long hair can be caught in moving parts.*
16. If devices are provided for the connection of dust extraction and collection facilities, ensure these are connected and properly used. *Use of dust collection can reduce dust-related hazards.*

Power Tool Use and Care

17. Do not force the power tool. Use the correct power tool for your application. *The correct power tool will do the job better and safer at the rate for which it was designed.*
18. Do not use tool if switch does not turn it on or off. *Any power tool that cannot be*

controlled with the switch is dangerous and must be repaired.

19. Disconnect the plug from the power source and/or the battery pack from the power tool before making any adjustments, changing accessories, or storing power tools. *Such preventive safety measures reduce the risk of starting the power tool accidentally.*
20. Store idle power tools out of the reach of children and do not allow persons unfamiliar with the power tool or these instructions to operate the power tool. *Power tools are dangerous in the hands of untrained users.*
21. Maintain power tools. Check for misalignment or binding of moving parts, breakage of parts and any other condition that may affect the power tool's operation. If damaged, have the power tool repaired before use. *Many accidents are caused by poorly maintained power tools.*
22. Keep cutting tools sharp and clean. *Properly maintained cutting tools with sharp cutting edges are less likely to bind and are easier to control.*
23. Use the power tool, accessories and tool bits etc. in accordance with these instructions, taking into account the working conditions and the work to be performed. *Use of the power tool for operations different from those intended could result in a hazardous situation.*

Service

24. Have your power tool serviced by a qualified repair person using only identical replacement parts. *This will ensure that the safety of the power tool is maintained.*

VOLTAGE WARNING:

Before connecting the machine to a power source (receptacle, outlet, etc.), be sure the voltage supplied is the same as that specified on the nameplate of the machine. A power source with voltage greater than that specified for the machine can result in **SERIOUS INJURY** to the user, as well as damage to the machine. If in doubt, **DO NOT PLUG IN THE MACHINE**. Using a power source with voltage less than nameplate rating is harmful to the motor.

SPECIFICATIONS

Model	Q1U-FF-160	Q1U-FF02-160B
Rated Power Input	800 W	1010 W
No-Load Speed	680 r/min	620 r/min
Net Weight	2.4 Kg	3.5 Kg

※ Due to the continuing program of research and development, the specifications herein are subject to change without prior notice.

ADDITIONAL SAFETY RULES

1. Always hold the tool firmly and provide for a secure stance. The power tool is guided more secure with both hands.
2. Make sure the stirring paddle is mounted securely before starting operation.
3. Always wait until the tool has come to a complete stop before placing it down or changing the direction of its rotation.
4. Keep hands away from rotating parts.
5. Do not use for explosive materials (e. g. easily inflammable solvent). Power tools produce sparks which could ignite developing vapours.
6. Do not use a tool with a damaged mains cable. Do not touch the damaged cable and pull the mains plug when the cable is damaged while working. Damaged cables increase the risk of an electric shock.
7. In case the tool should fall into the material to be stirred, pull the mains plug immediately and have the tool checked by an after-sales service agent. Material that has penetrated the tool can cause damage and lead to an electric shock.
8. Always use the auxiliary handle supplied with the tool. Loss of control can cause personal injury.

SAVE THESE INSTRUCTIONS.

WARNING! MISUSE or failure to follow the safety rules stated in this instruction manual may cause serious personal injury.

INSTRUCTIONS FOR OPERATION

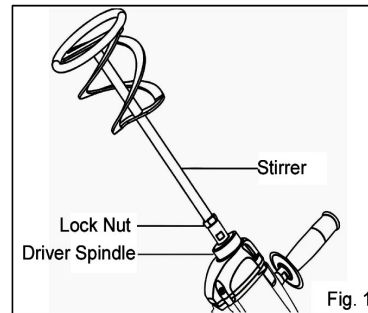
Installing or Removing Stirring Paddle

CAUTION:

Always be sure that the tool is switched off and unplugged before installing or removing stirring paddle.

To install the stirring paddle, screw the stirrer into the drive spindle and tighten the lock nut securely. (Fig. 1)

To remove the stirring paddle, follow the installation procedures in reverse.



Switch Action

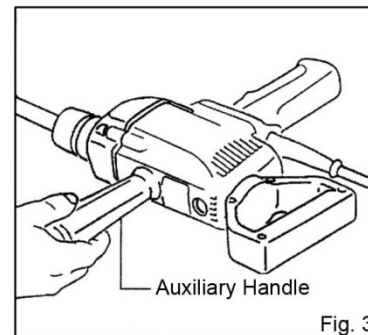
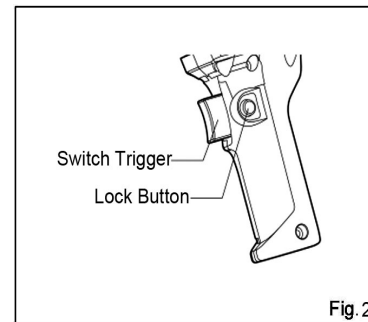
To start the tool, simply pull the switch trigger, release the switch trigger to stop the tool. (Fig. 2)

For continuous operation, press the trigger switch and then push in the lock button. To stop the tool from the locked position, pull the trigger fully

then release it. (Fig. 2)

CAUTION:

- Before plugging in the tool, always check to see that the switch trigger actuates properly and returns to the "OFF" position when released.
- Change the direction of rotation only when the tool comes to a complete stop. Changing it before the tool stops may damage the tool.



Auxiliary Handle

Screw the auxiliary handle to the tool securely. (Fig. 3)

CAUTION: Always use auxiliary handle for safe operation.

Stirring Operation

When start stirring operation, put the stirring paddle into the material to be stirred firstly before switching on the tool; And when stop operation, switch off the tool firstly and wait until the tool has come to a complete stop before pulling the stirring paddle out.

CAUTION:

- Change the stirring operation only when the tool has come to a complete stop.
- Move the tool up and down while stirring.
- Clean the stirring paddle after use.

MAINTENANCE AND INSPECTION

CAUTION:

Always be sure that the tool is switched off and unplugged before attempting to perform inspection or maintenance.

1. Inspecting the Mounting Screws

Regularly inspect all mounting screws and ensure that they are properly tightened. Should any of the screws be loose, retighten them immediately. Failure to do so could result in serious hazard.

2. Maintenance of the Motor

The motor unit winding is the very "heart" of the power tool. Exercise due care to ensure the winding does not become damaged and /or wet with oil or water.

3. Inspecting and replacing the carbon brushes

Remove and check the carbon brushes regularly. Replace when they wear down to the limit mark (Fig. 4). Keep the carbon brushes clean and free to slip in the holders. Both carbon brushes should be replaced at the same time. Use only identical carbon brushes.

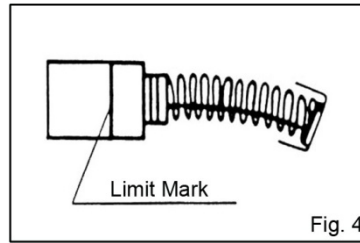


Fig. 4

Use a screwdriver to remove the brush holder caps. Take out the worn carbon brushes, insert the new ones and secure the brush holder caps. (Fig. 5)

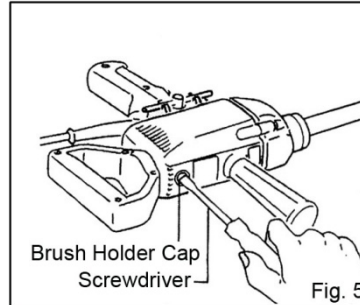
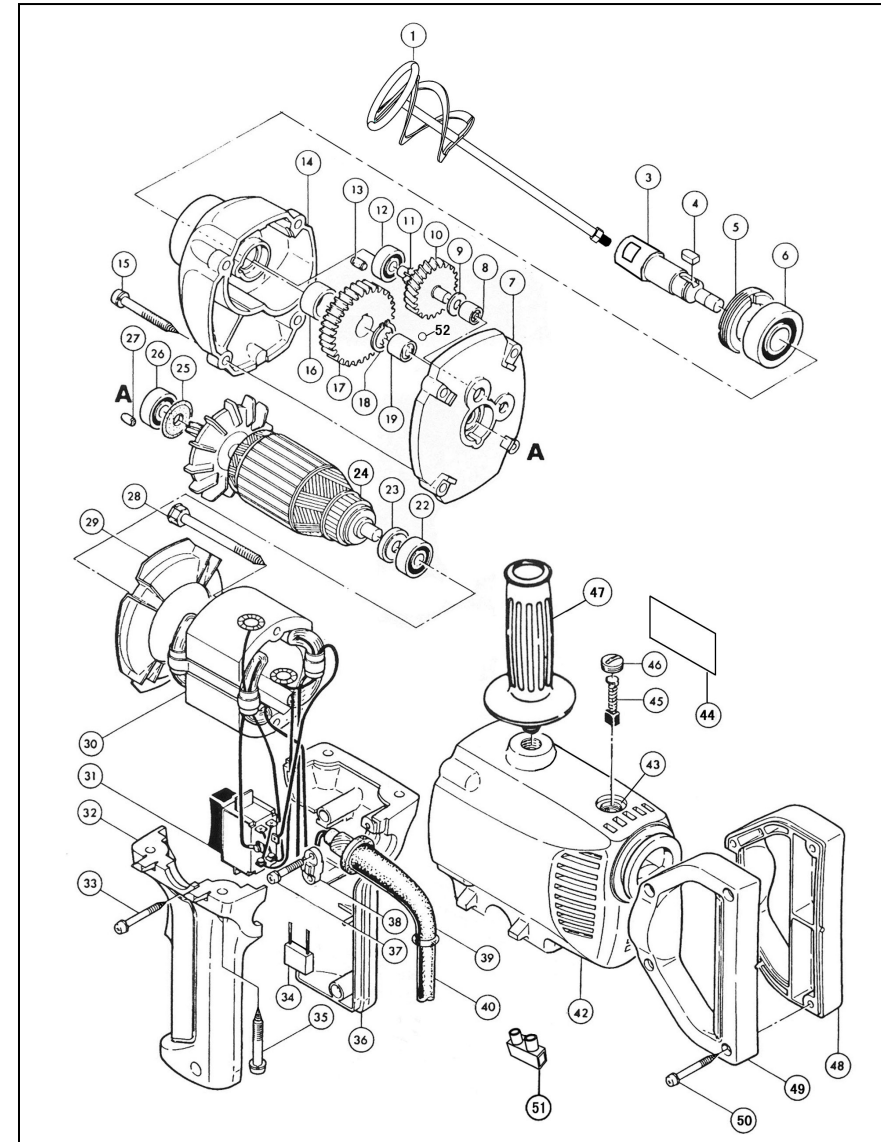


Fig. 5

✘ Damaged cord must be replaced by a special cord purchased from authorized service center.

✘ To maintain product SAFETY and RELIABILITY, repairs, any other maintenance or adjustment should be performed by authorized service centers, always using original replacement parts.



EXPLANATION OF GENERAL VIEW

1	Stirring Paddle and Stirrer Assembly	29	Baffle Plate
3	Drive Spindle	30	Stator Assembly
4	Flat Key	31	Trigger Switch
5	Bearing Retainer	32	Left –half Handle
6	Ball Bearing	33	Pan Head Tapping Screw
7	Gear Housing Cover	34	Capacitor
8	Needle Bearing	35	Pan Head Tapping Screw
9	Fiber Washer	36	Right-half Handle
10	Gear(Small)	37	Pan Head Tapping Screw
11	Drive Shaft	38	Strain Relief
12	Ball Bearing	39	Cord Guard
13	Rubber Pin	40	Cord
14	Gear Housing	42	Motor Housing
15	Pan Head Tapping Screw	43	Carbon Brush Holder
16	Spacer Ring	44	Nameplate
17	Gear (Large)	45	Carbon Brush
18	Circlip for Shaft	46	Brush Holder Cap
19	Needle Bearing	47	Auxiliary Handle
22	Ball Bearing	48	Carrying Handle
23	Insulation Washer	49	
24	Armature Assembly	50	Pan Head Tapping Screw
25	Rubber Washer	51	Terminal Block
26	Ball Bearing	52	Steel Ball
27	Rubber Pin		
28	Pan Head Tapping Screw		