



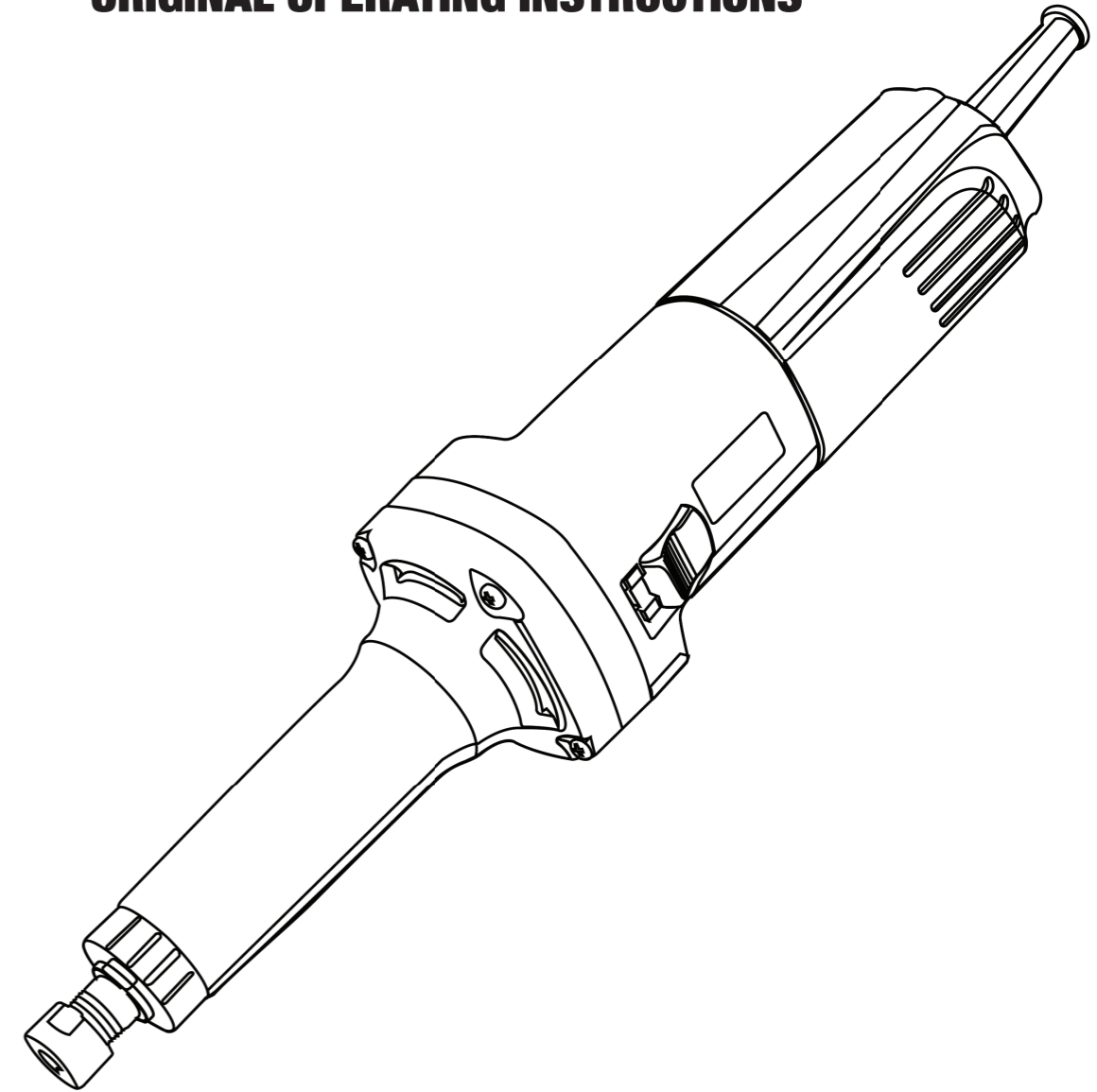
www.adendorff.co.za

SGRIND-006

ELECTRIC DIE GRINDER



ORIGINAL OPERATING INSTRUCTIONS



DANGER! Read all safety regulations and instructions. Keep all safety regulations and instructions in a safe place for future use.



www.adendorff.co.za

E&OE Please Note that details and specifications contained herein, are correct at the time of publishing. Adendorff reserve the right to change specifications at any time without prior notice.

COPYRIGHT ADENDORFF MACHINERY MART

GENERAL POWER TOOL SAFETY WARNINGS

(For All Power Tools)

⚠ WARNING! Read and understand all instructions. *Failure to follow all instructions listed below may result in electric shock, fire and/or serious personal injury.*

Save all warnings and instructions for future reference.

The term “power tool” in the warnings refers to your mains-operated (corded) power tool or battery-operated (cordless) power tool.

Work Area Safety

1. Keep work area clean and well lit. *Cluttered or dark areas invite accidents.*
2. Do not operate power tools in explosive atmospheres, such as in the presence of flammable liquids, gases, or dust. *Power tools create sparks which may ignite the dust or fumes.*
3. Keep children and bystanders away while operating a power tool. *Distractions can cause you to lose control.*

Electrical Safety

4. Power tool plugs must match the outlet. Never modify the plug in anyway. Do not use any adapter plugs with earthed (grounded) power tools. *Unmodified plugs and matching outlets will reduce risk of electric shock.*
5. Avoid body contact with earthed or grounded surfaces, such as pipes, radiators, ranges and refrigerators. *There is an increased risk of electric shock if your body is earthed or grounded.*
6. Do not expose power tools to rain or wet conditions. *Water entering a power tool will increase the risk of electric shock.*
7. Do not abuse the cord. Never use the cord for carrying, pulling or unplugging the power tool. Keep cord away from heat, oil, sharp edges or moving parts. *Damaged or entangled cords increase the risk of electric shock.*
8. When operating a power tool outdoors, use an extension cord suitable for outdoor use. *Use of a cord suitable for outdoor use reduces the risk of electric shock.*
9. If operating a power in a damp location is unavoidable, use a residual current device (RCD)

protected supply. *Use of an RCD reduces the risk of electric shock.*

NOTE: The term “residual current device (RCD)” may be replaced by the term “ground fault circuit interrupter (GFCI)” or “earth leakage circuit breaker (ELCB)”.

Personal Safety

10. Stay alert, watch what you are doing and use common sense when operating a power tool. Do not use a power tool while you are tired or under the influence of drugs, alcohol, or medication. *A moment of inattention while operating power tools may result in serious personal injury.*
11. Use personal protective equipment. Always wear eye protection. *Protective equipment such as dust mask, non-skid safety shoes, hard hat, or hearing protection used for appropriate conditions will reduce personal injuries.*
12. Prevent unintentional starting. Ensure the switch is in the off-position before connecting to power source and /or battery pack, picking up or carrying the tool. *Carrying power tools with your finger on the switch or energising power tools that have the switch on invites accidents.*
13. Remove any adjusting key or wrench before turning the tool on. *A wrench or a key left attached to a rotating part of the power tool may result in personal injury.*
14. Do not overreach. Keep proper footing and balance at all times. *This enables better control of the power tool in unexpected situations.*
15. Dress properly. Do not wear loose clothing or jewellery. Keep your hair, clothing, and gloves away from moving parts. *Loose clothes, jewellery or long hair can be caught in moving parts.*
16. If devices are provided for the connection of dust extraction and collection facilities, ensure these are connected and properly used. *Use of dust collection can reduce dust-related hazards.*

Power Tool Use and Care

17. Do not force the power tool. Use the correct power tool for your application. *The correct power tool will do the job better and safer at the rate for which it was designed.*
18. Do not use tool if switch does not turn it on or off. *Any power tool that cannot be controlled with the switch is dangerous and must be repaired.*

19. Disconnect the plug from the power source and/or the battery pack from the power tool before making any adjustments, changing accessories, or storing power tools. *Such preventive safety measures reduce the risk of starting the power tool accidentally.*
20. Store idle power tools out of the reach of children and do not allow persons unfamiliar with the power tool or these instructions to operate the power tool. *Power tools are dangerous in the hands of untrained users.*
21. Maintain power tools. Check for misalignment or binding of moving parts, breakage of parts and any other condition that may affect the power tool's operation. If damaged, have the power tool repaired before use. *Many accidents are caused by poorly maintained power tools.*
22. Keep cutting tools sharp and clean. *Properly maintained cutting tools with sharp cutting edges are less likely to bind and are easier to control.*
23. Use the power tool, accessories and tool bits etc. in accordance with these instructions, taking into account the working conditions and the work to be performed. *Use of the power tool for operations different from those intended could result in a hazardous situation.*

Service

24. Have your power tool serviced by a qualified repair person using only identical replacement parts. *This will ensure that the safety of the power tool is maintained.*

VOLTAGE WARNING:

Before connecting the machine to a power source (receptacle, outlet, etc.), be sure the voltage supplied is the same as that specified on the nameplate of the machine. A power source with voltage greater than that specified for the machine can result in **SERIOUS INJURY** to the user, as well as damage to the machine. If in doubt, **DO NOT PLUG IN THE MACHINE**. Using a power source with voltage less than nameplate rating is harmful to the motor.

SPECIFICATIONS

Rated Power Input	550 W
Rated Speed	9000-26700 r/min
Max. Grinding Wheel Diameter	Ø25 mm
Max. Collet Size	6 mm
Net Weight	1.6 kg

※Due to the continuing program of research and development, the specifications herein are subject to change without prior notice.

ADDITIONAL SAFETY RULES

1. Use only wheel points having a maximum operating speed at least as high as “No-Load Speed” marked on the tool's nameplate.
2. Check the wheel point carefully for cracks or damage before operation. Replace cracked or damaged wheel point immediately. Run the tool at no load for about a minute, holding tool away from others. If wheel is flawed, it will likely separate during this test.
3. Hold the tool firmly.
4. Keep hands away from rotating parts.
5. Make sure the wheel point is not contacting the workpiece before the switch is turned on.
6. Before using the tool on an actual workpiece, let it run for more than one minute. (When mounting a new wheel point, let it run for more than three minutes.) Watch for vibration or wobbling that could indicate poor installation or poorly balanced wheel point.
7. Watch out for flying sparks. Hold the tool so that sparks fly away from you and other persons or flammable materials.
8. Do not leave the tool running. Operate the tool only when hand-held.
9. Always be sure you have a firm footing. Be sure no one is below when using the tool in high locations.
10. Do not use water or grinding lubricant.
11. Do not use this tool as cutter.

12. Do not touch the workpiece immediately after operation, it may be extremely hot and could burn your skin.
13. ALWAYS wear proper apparel including long sleeve shirts, leather gloves and shop aprons to protect skin from contact with hot grindings.
14. Use of this tool to grind or sand some products, paints and wood could expose user to dust containing hazardous substances. Use appropriate respiratory protection.

SAVE THESE INSTRUCTIONS.

WARNING! MISUSE or failure to follow the safety rules stated in this instruction manual may cause serious personal injury.

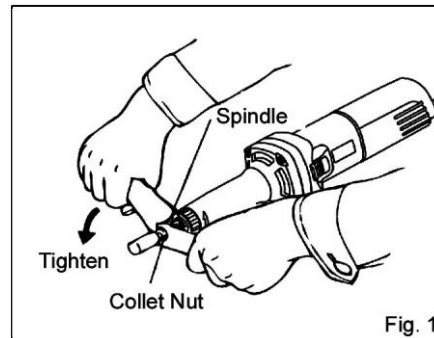
INSTRUCTIONS FOR OPERATION

Installing or Removing the Wheel Point

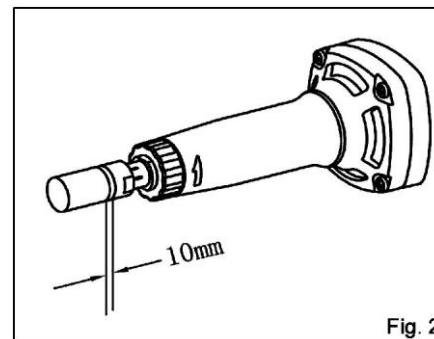
CAUTION:

Always be sure that the tool is switched off and unplugged before installing or removing the wheel point.

Loosen the collet nut and insert the wheel point into the collet nut. Use the smaller wrench to hold the spindle and use the larger one to tighten the collet nut securely. (Fig. 1)



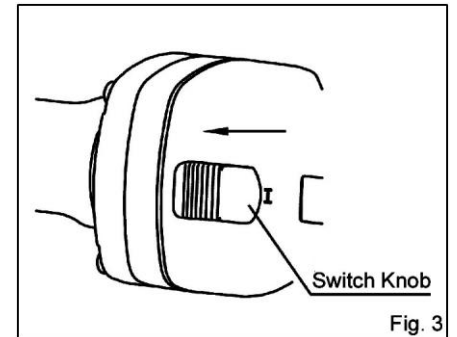
The wheel point should not be mounted more than 10 mm from the collet nut. Exceeding this distance could cause vibration or a broken shaft. (Fig. 2)



To remove the wheel point, follow the installation procedures in reverse.

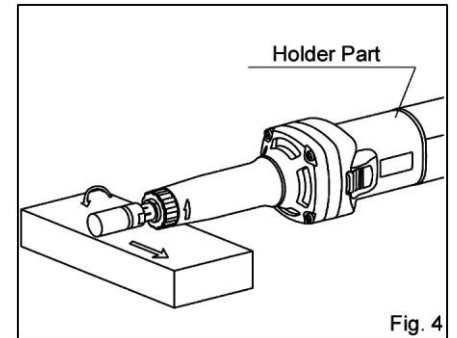
Switch Operation

To start the tool, push the switch knob and fix it. To stop, just release the switch knob. (Fig. 3)



Operation

Turn the tool on without the wheel point making any contact with the workpiece and wait until the wheel point attains full speed. Then apply the wheel point to the workpiece gently. To obtain a good finish, move the tool in the leftward direction slowly. (Fig. 4)

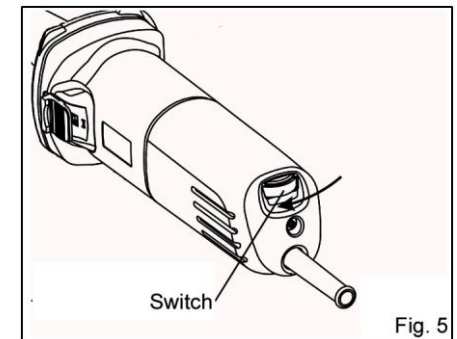


CAUTION:

Apply light pressure on the tool. Excessive pressure on the tool will only cause a poor finish and overloading of the motor.

Speed Adjusting

Higher speed is obtained when the dial is turned in the direction of number max. And lower speed is obtained when it is turned in the direction of number 1. (Fig. 5)

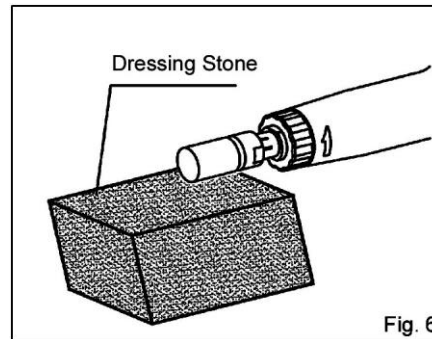


Refer to the table for the relationship between the number settings on the dial and the approximate tool speed.

Number	Speed (rpm)
1	9000
2	13000
3	17500
4	21500
5	25000
Max	26700

Dressing Wheel Point

When the wheel point becomes “loaded” with various bits and particles, you should dress the wheel point with dressing stone. (Fig. 6)



should be replaced at the same time.

- ※ Damaged cord must be replaced by a special cord purchased from authorized service center.
- ※ To maintain product SAFETY and RELIABILITY, repairs, any other maintenance or adjustment should be performed by authorized centers, always using original replacement parts.

MAINTENANCE AND INSPECTION

CAUTION:

Always be sure that the tool is switched off and unplugged before carrying out any work on the tool.

1. Inspecting the mounting screws

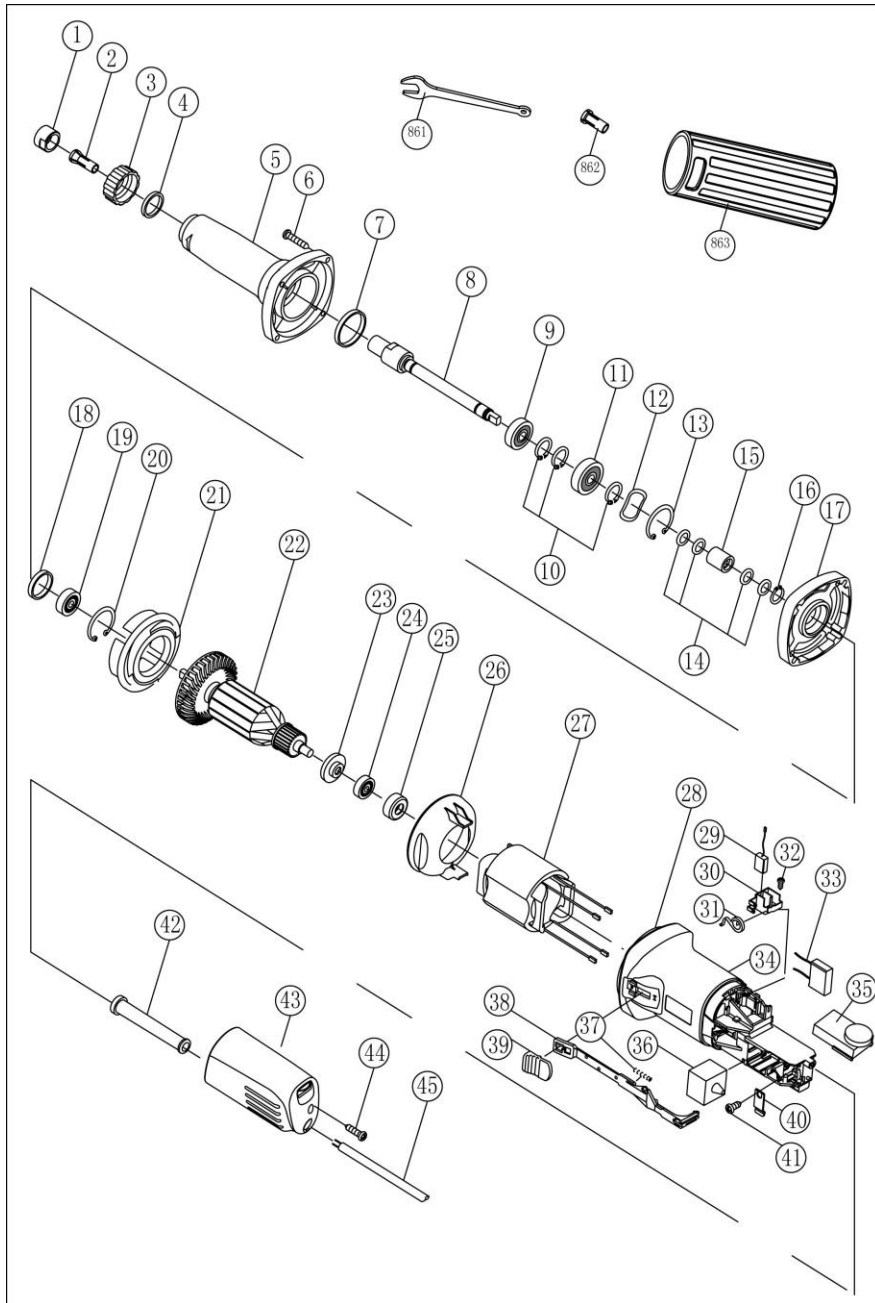
Regularly inspect all mounting screws and ensure that they are properly tightened. Should any of the screws be loose, retighten them immediately. Failure to do so could result in serious hazard.

2. Maintenance of the motor

The motor unit winding is the very “heart” of the power tool. Exercise due care to ensure the winding does not become damaged and /or wet with oil or water.

3. Inspecting and replacing the carbon brushes

Remove and check the carbon brushes regularly. Replace when they wear down to the limit mark. Keep the carbon brushes clean and free to slip in the holders. Both carbon brushes



EXPLANATION OF GENERAL VIEW

1	Collet Nut	26	Baffle Plate
2	Collet	27	Stator Assembly
3	Cover	28	Motor Housing
4	Seal	29	Carbon Brush
5	Barrel	30	Carbon Brush Holder
6	Pan Head Tapping Screw ST4×35	31	Belleville Spring
7	Damping Washer (30×33×4)	32	Pan Head Tapping Screw ST2.9×9
8	Drive Spindle	33	Capacitor
9	Ball Bearing 600ZZ	34	Nameplate
10	Circlip for Shaft 10	35	Speed Adjusting Dial Ass'y
11	Ball Bearing 6200ZZ	36	Switch
12	Wave Spring Washer 29	37	Spring for Switch Lever (4.2×0.5×27)
13	Circlip for Hole 30	38	Switch Lever
14	O Ring (5.6×1.5)	39	Switch Knob
15	Coupling	40	Strain Relief
16	Circlip for Shaft 8	41	Pan Head Tapping Screw ST4×12
17	Gear Housing Cover	42	Cord Guard
18	Seal (22×25.2×4)	43	Rear Cover
19	Ball Bearing 608ZZ	44	Pan Head Tapping Screw ST4.2×19
20	Circlip for Hole	45	Cord
21	Guide Plate	861	Wrench
22	Armature Assembly	862	Collet
23	Insulation Washer	863	Barrel Guard
24	Ball Bearing 607ZZ		
25	Bearing Cover (19×21.2×8.6)		