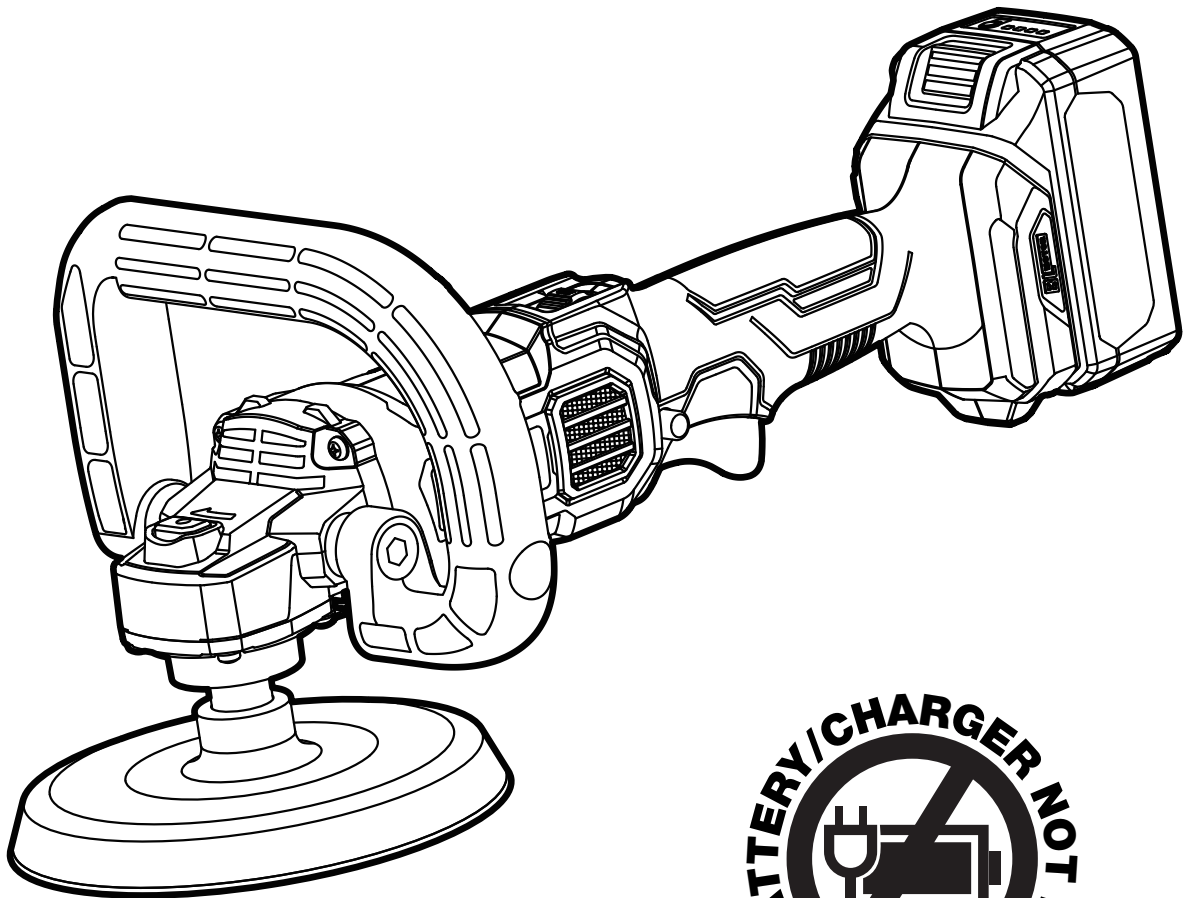


Model: SPOLIS180

180MM CORDLESS BRUSHLESS ORBIT POLISHER



OPERATING INSTRUCTIONS / USER MANUAL



**Please read this manual carefully before use.
Retain it for future reference. Failure to follow safety
instructions may result in injury or product damage.**



E&OE Please Note that details and specifications contained herein, are correct at the time of publishing.
Adendorff reserve the right to change specifications at any time without prior notification.

vs1

TABLE OF CONTENTS

Introduction	2
Technical Details & Specifications	3
Packaging Contents	3
Safety Warnings	4
PPE Requirements	5
Operating Environment Requirements	6
Further Safety Requirements	6
Battery Safety Warnings	7
Operating the Battery Cartridge	8
Notes for Operation	10
Installing or Removing Disc	10
Installing or Removing Auxillary Handle	11
Speed Control	11
Maintenance & Service Intervals	12
Storage Instructions	13
Troubleshooting	13
Disposal Guidelines	13
Parts List & Exploded Diagram	14
Customer Support - Repairs & Warranty	16
Service & Repair Contact Instructions	17

WELCOME TO THE ADENDORFF FAMILY!

We are delighted to have you with us. To ensure you get the best performance from your new product, we kindly advise you to read the instruction manual thoroughly before installation and use. This will help you maximize its potential and ensure a smooth and safe experience.

Thank you for choosing our product. We appreciate your trust and support, and we are confident that it will serve you well. Should you have any questions or require further assistance, please feel free to reach out to us.

IMPORTANT: Please store and save this manual in a safe, dry place for future reference. It contains essential safety, maintenance, and troubleshooting information that may be needed during the product's lifetime.

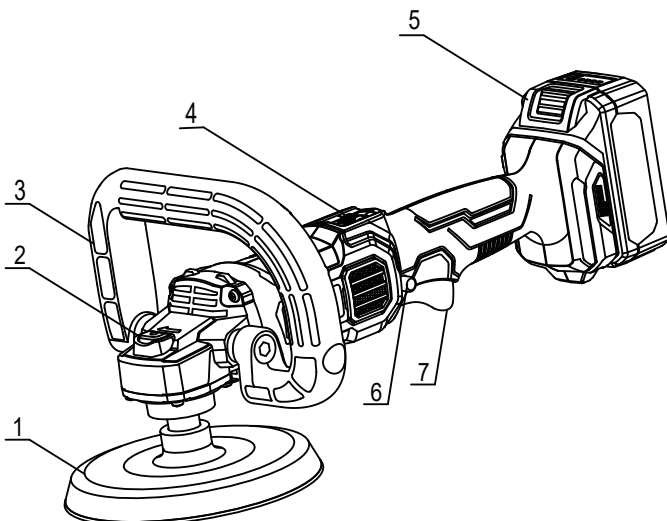
TECHNICAL DETAILS & SPECIFICATIONS

SPECIFICATION	VALUE
Model	SPOLIS180
	DCSP02-180
Power Voltage	20V
Rated Speed	500-3000/min
Speed Setting 6-speed	(500 1000 1500 2000 2500 3000)
Wheel Size	Ø 180mm
Drive Spindle Thread	M16
Net Weight of The Machine (Without Battery)	1.5kg

Inspect before each use. Do not use if there are broken, bent, cracked or damaged parts. Any product that appears damaged in any way, or operates abnormally shall be removed from service immediately. If the product has been subjected to a shock load (a load dropped suddenly, unexpectedly upon it), immediately discontinue use until it has been inspected by Adendorff Machinery Mart authorized service center. It is recommended that an annual inspection be done by qualified personnel. Labels and Operator's Manuals are available from manufacturer.

This device is intended to be used to the polishing of wood surface and painted wooden furniture surface, the measurement of synthetic resin and hard rubber products, the polishing of painted metal parts, etc. under general environmental conditions. This device is not intended, designed or engineered to be used for any other purpose.

PACKAGING CONTENTS



- 1. Self-Adhesive Disc**
- 2. Lock-On Button**
- 3. Auxiliary Handle**
- 4. Speed Control Knob**
- 5. 20V Battery Pack**
- 6. Lock Button**
- 7. Switch Knob**

SAFETY WARNINGS

WARNING!

Read and save all safety warnings and instructions carefully. Failure to follow these warnings may result in electric shock, fire, or serious injury. Keep all warnings and instructions for future reference.

ELECTRICAL SAFETY

- **Ensure electrical tool plugs match the outlet.** Never modify the plug in any way or use adapter plugs with earthed (grounded) power tools. Properly matched, unmodified plugs and outlets reduce the risk of electric shock.
- **Avoid contact with earthed or grounded surfaces** such as pipes, radiators, ranges, and refrigerators. Contact with these surfaces increases the risk of electric shock.
- **Keep electrical tools away from rain or wet conditions.** Water entering a power tool significantly raises the risk of electric shock.
- **If using a electrical tool in a damp location is unavoidable,** ensure the power supply is protected by a **Ground Fault Circuit Interrupter (GFCI)**. A GFCI reduces the risk of electric shock in such conditions.

PERSONAL SAFETY

- **Stay alert and focused.** Always pay attention to what you are doing and use common sense when operating a power tool. Avoid using power tools if tired or under the influence of drugs, alcohol, or medication. A moment of inattention can result in serious personal injury.
- **Prevent unintentional starting.** Ensure the switch is in the OFF position before connecting the tool to a power source, attaching a battery pack, picking up, or carrying the tool. Carrying tools with your finger on the switch or connecting power while the tool is on increases the risk of accidental activation.
- **Remove all adjusting keys or wrenches before turning on the tool.** Leaving these attached to rotating parts can cause serious personal injury.
- **Maintain proper footing and balance.** Avoid overreaching, and always keep a stable stance to retain control of the tool in unexpected situations.
- **Use dust extraction and collection systems if available.** Properly connecting and using these systems helps reduce dust-related hazards.

POWER TOOL USE AND CARE

- **Use the correct tool for the job.** Do not force the power tool to perform tasks it is not designed for. The appropriate power tool will complete the task more efficiently and safely when used as intended.
- **Ensure proper operation of the switch.** Do not use the power tool if the switch does not properly turn it on and off. A tool that cannot be controlled via the switch is hazardous and should be repaired before use.
- **Disconnect the power source before adjustments.** Always unplug the Tool or remove the battery pack before adjusting, changing accessories, or storing the tool. This precaution prevents accidental activation.
- **Store tools securely and out of reach of children.** Keep idle power tools in a safe location, away from children and individuals unfamiliar with their operation. Tools in the hands of untrained users can be dangerous.

- **Maintain tools.** Regularly inspect power tools for misalignment, binding of moving parts, breakage, or any condition that may affect their performance. Damaged tools should be repaired before use, as poorly maintained tools are a common cause of accidents.
- **Keep cutting tools sharp and clean.** Properly maintained and sharp cutting edges reduce the likelihood of binding and make the tool easier to control.
- **Follow the tool's instructions and intended use.** Use the power tool, accessories, and bits according to the provided instructions and the conditions of the task. Using tools for unintended applications can lead to hazardous situations.

BATTERY TOOL USE AND CARE

- **Recharge only with the charger specified by the manufacturer.** Using a charger designed for a different battery pack may pose a risk of fire or damage to the battery.
- **Use designated battery packs.** Operate tools only with the specific battery packs recommended by the manufacturer. Using other battery packs may result in injury or fire.
- **Store battery packs safely.** When not in use, keep the battery pack away from metal objects such as paper clips, coins, keys, nails, or screws. These items can create a connection between terminals, potentially causing burns or a fire.
- **Handle leaking batteries with care.** Under abusive conditions, liquid may leak from the battery:
- **Avoid contact with the liquid.** If accidental contact occurs, flush the area with water. If the liquid enters the eyes, rinse thoroughly with clean water for at least 10 minutes and seek medical attention. Battery liquid may cause irritation or burns.

SERVICE

- **Use qualified service professionals.** Always have tools serviced by a qualified repair technician at Adendorff Machinery Mart www.adendorff.co.za, ensuring that only identical replacement parts are used. This guarantees the safety and performance of the tool.
- **Adhere to maintenance guidelines.** Follow the manufacturer's instructions for lubrication and accessory changes to maintain the tool's functionality and longevity.
- **Maintain cleanliness.** Keep handles and external surfaces dry, clean, and free from oil and grease. A clean tool provides better grip and reduces the risk of slipping during use.

PPE REQUIREMENTS

- **Use appropriate personal protective equipment.** Always wear eye protection, and use additional protective equipment such as a dust mask, non-skid safety shoes, a hard hat, or hearing protection, depending on the conditions. These measures reduce the risk of injury.
- **Dress appropriately.** Avoid wearing loose clothing or jewellery, and ensure long hair is tied back. Keep hair, clothing, and gloves away from moving parts to prevent entanglement.

OPERATING ENVIRONMENT REQUIREMENTS

- **Keep the work area clean and well-lit.** Cluttered or poorly lit spaces increase the risk of accidents.
- **Avoid operating power tools in explosive atmospheres.** Do not use tools in environments with flammable liquids, gases, or dust, as power tools generate sparks that could ignite these substances.
- **Keep children and bystanders at a safe distance** while operating a power tool. Distractions can lead to a loss of control, increasing the risk of injury.

FURTHER SAFETY REQUIREMENTS

- **Kickback and related warnings:** Kickback is a sudden reaction to a pinched or snagged rotating wheel, backing pad, brush or any other accessory. Pinching or snagging causes rapid stalling of the rotating accessory which in turn causes the uncontrolled power tool to be forced in the direction opposite of the accessory's rotation at the point of the binding. For example, if an abrasive wheel is snagged or pinched by the workpiece, the edge of the wheel that is entering into the pinch point can dig into the surface of the material causing the wheel to climb out or kick out. The wheel may either jump toward or away from the operator, depending on direction of the wheel's movement at the point of pinching. Abrasive wheels may also break under these conditions.

Kickback is the result of power tool misuse and/or incorrect operating procedures or conditions and can be avoided by taking proper precautions as given below.

- **Maintain a firm grip with both hands** on the power tool and position your body and arms to allow you to resist kickback forces. Always use auxiliary handle, if provided, for maximum control over kickback or torque reaction during start-up. The operator can control torque reactions or kickback forces, if proper precautions are taken.
- **Never place your hand near the rotating accessory.** Accessory may kickback over your hand.
- **Do not position your body in the area where power tool will move if kickback occurs.** Kickback will propel the tool in direction opposite to the wheel's movement at the point of snagging.
- **Use special care when working corners, sharp edges, etc.** Avoid bouncing and snagging the accessory. Corners, sharp edges or bouncing have a tendency to snag the rotating accessory and cause loss of control or kickback.
- **Do not attach a saw chain woodcarving blade, segmented diamond wheel with a peripheral gap greater than 10 mm or toothed saw blade.** Such blades create frequent kickback and loss of control.
- **Do not allow any loose portion of the polishing bonnet or its attachment strings to spin freely.** Tuck away or trim any loose attachment strings. Loose and spinning attachment strings can entangle your fingers or snag on the workpiece.

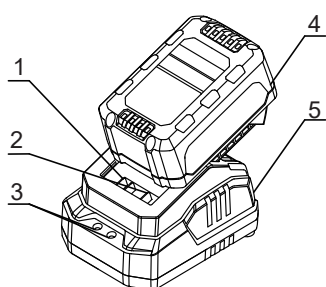
BATTERY SAFETY WARNINGS

- Do not dismantle, open or shred secondary cells or batteries.
- Keep batteries out of the reach of children. Battery usage by children should be supervised. Especially keep small batteries out of reach of small children.
- Do not expose cells or batteries to heat or fire. Avoid storage in direct sunlight.
- Do not short-circuit a cell or a battery. Do not store cells or batteries haphazardly in a box or drawer where they may short-circuit each other or be shortcircuited by other metal objects.
- Do not subject cells or batteries to mechanical shock.
- In the event of a cell leaking, do not allow the liquid to come in contact with the skin or eyes. If contact has been made, wash the affected area with copious amounts of water and seek medical advice.
- Do not use any charger other than that specifically provided for use with the equipment.
- Do not use any cell or battery which is not designed for use with the equipment.
- Do not mix cells of different manufacture, capacity, size or type within a device.
- Always purchase the battery recommended by the device manufacturer for the equipment.
- Keep cells and batteries clean and dry. Wipe the cell or battery terminals with a clean dry cloth if they become dirty.
- Secondary cells and batteries need to be charged before use. Always use the correct charger and refer to the manufacturer's instructions or equipment manual for proper charging instructions.
- Do not leave a battery on prolonged charge when not in use.
- After extended periods of storage, it may be necessary to charge and discharge the cells or batteries several times to obtain maximum performance.
- Retain the original product literature for future reference.
- Use the cell or battery only in the application for which it was intended.
- When possible, remove the battery from the equipment when not in use.
- Keep the cell or battery away from microwaves and high pressure.
- Dispose of properly.

OPERATING THE BATTERY CARTRIDGE

BATTERY CHARGING

- The battery pack can only be charged by the charger that comes with the machine. Never use other charger.
- In a high temperature environment or after a long time of use, the machine may become hot. Please do not immediately charge the battery until it cools down. Otherwise, the service life of the battery pack will be shortened or the battery pack will not be able to be charged due to overheating.
- A battery that is new or has not been used for a long period of time does not develop its full capacity until after approximately 3-4 charging/discharging cycles.
- A significantly reduced working period after charging indicates a used up battery that must be replaced.



1. Negative Pole
2. Positive Pole
3. Indicator Light
4. Battery Pack
5. Charger

INSTALLING OR REMOVING BATTERY PACK

CAUTION:

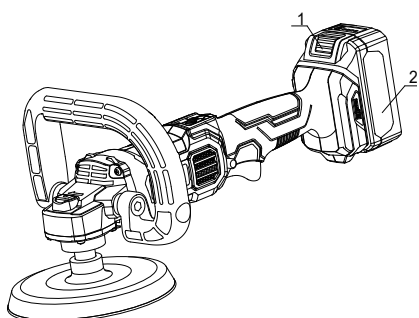
- When installing or removing the battery pack, please insure that the switch is off to avoid danger. The battery pack is only partially charged when delivered. In order to ensure the maximum power of the battery, the battery pack must be fully charged in the charger before the first use.

1. Installing the battery pack

As below, when inserting the battery pack, pay attention to insert the battery pack into the housing correctly. Be sure to insert the battery pack until you hear the “click” sound, which means that the battery pack has been firmly installed on the tool. Otherwise, the battery pack will accidentally fall off the housing, causing injuries to the operator or others. Avoid inserting the battery pack with excessive force or tapping it in with the help of other objects.

CAUTION:

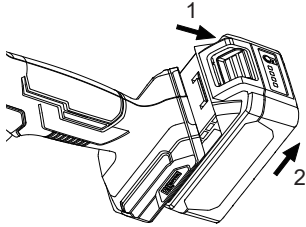
Only the specified type of battery pack can be used. The use of battery packs of other brands carries the risk of injury, personal injury and property damage due to battery pack explosion.



1. Battery Pack Button
2. Battery Pack

2. Removing the battery pack

The battery pack is equipped under the machine handle, press the battery pack button down in the direction of arrow, and then pull out the battery pack in the direction of arrow as shown in the figure.



CAUTION:

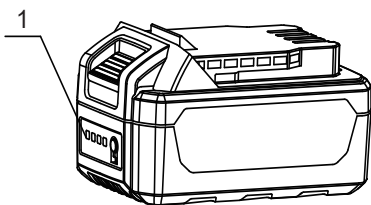
DON'T PULL OUT THE BATTERY FORCIBLY!

1. Press the battery pack button down in the direction of arrow
2. Pull out the battery pack in the direction of arrow

BATTERY INDICATOR LIGHT

When the battery pack button is pressed, the light will display the power of the battery, indicated by the status of the four red LED lights (hereinafter referred to as red light).

STATUS OF RED LED LIGHTS	APPROX. BATTERY POWER LEFT
4 red lights lit	75%~100%
3 red lights lit	50%~75%
2 red lights lit	25%~75%
1 red lights lit	10%~25%
1 light flashing	Battery low



1. Battery Indicator Light

CONTINUOUS USE

If the tool is operated continuously until the battery has discharged, allow the tool to rest for 15 minutes before proceeding with a fresh battery.

OVER-DISCHARGE PROTECTION

The tool is equipped with a protective circuit to protect the battery against over-discharging. When the battery is near to be empty, the protective circuit actuates to switch off the tool.

DISPOSAL OF BATTERY

To protect natural resources, please recycle or dispose of batteries properly. The battery contains lithium. Consult your local authority for information on recycling and/or disposal. Remove the battery after it has run out of power and wrap the pole port with strong tape to avoid short circuit and leakage. Any attempt to open or remove any component is strictly prohibited.

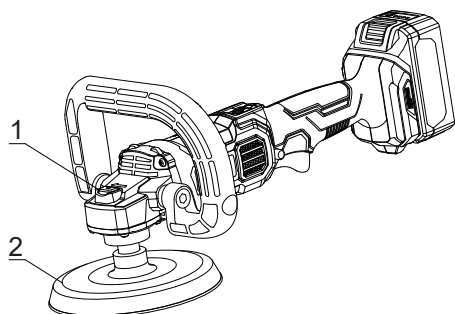
NOTES FOR OPERATION

1. Always keep workpiece secured or well clamped to avoid looseness.
2. Any move of workpiece will affect the actual cutting or polishing quality.
3. Do not use damaged sandpaper, which will damage the baseplate of the machine. Our quality assurance does not include the wear of the baseplate.
4. Use sanding sheet of coarse sand for rough surfaces; medium grain size for smooth surfaces; fine sand for final sanding. Sand on scraps firstly for test if necessary
5. Intensifying pressure will decrease the operating capacity of the machine and lead to an overload of the motor. Replacing accessories in due course can keep the machine working efficiently.

INSTALLING OR REMOVING THE DISC

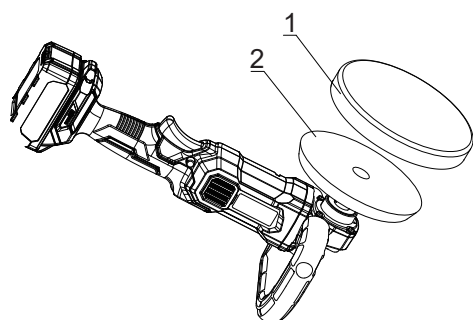
CAUTION:

- Always remove the battery pack before installing or removing the disc. Always wear protective grooves when exchanging the accessory to avoid being hurt. The disc will be extremely hot after long-time operation. Be careful not be burned.



1. Lock-On Button
2. Self-Adhesive Disc

- **TO INSTALL THE SELF-ADHESIVE DISC**, press the lock button by hand to fix spindle, and then tighten the self-adhesive disc on the spindle. To remove the self-adhesive disc, simply press the lock button to fix spindle, and then unscrew it.
- **TO INSTALL THE POLISHING DISC**, remove dirt and foreign matters on the self-adhesive disc, The accessory should be installed in line with the edge of the self-adhesive disc. To remove it from the self-adhesive disc, simply peel it off upwards.



CAUTION:

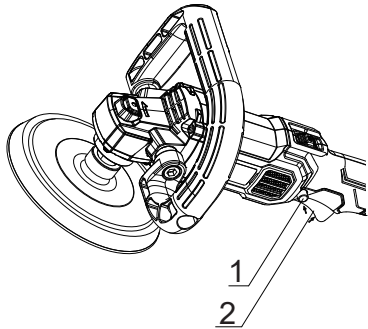
Make sure the accessory is aligned with the self-adhesive disc and firmly attached. Otherwise, it will cause excessive vibration during operation with the accessory, resulting in loss of control or flying off the self-adhesive disc.

1. Disc
2. Self-Adhesive Disc

ON/OFF

ON: To start the tool, simply depress the lock button and pull the switch trigger after installing the battery pack. Tool speed is increased by increasing pressure on the switch trigger. For continuous operation, first release the switch trigger after pressing it fully, and then the lock button. At this time, the switch trigger will be locked in the ON state.

OFF: When the switch is in the locked state, press the switch trigger again and release it after the lock button jumps up. When the switch is not in the locked state, just release the switch trigger to stop.



1. Lock button
2. Switch Knob

CAUTION:

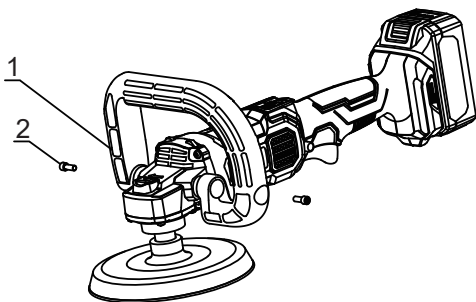
Always be sure that the tool is switched off and unplugged before installing the battery pack.

The lock function is only possible when the switch trigger is fully pressed.

INSTALLING OR REMOVING AUXILIARY HANDLE

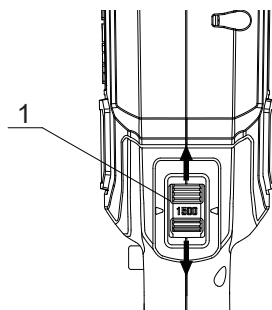
CAUTION:

- Be sure to remove the battery pack before installing or removing the auxiliary handle. Be sure to remove the battery pack before installing or removing the auxiliary handle. Place the auxiliary handle on the front housing first, put the washer and bolt, and screw the bolt into the housing with a screwdriver to fix the auxiliary handle.



1. Auxiliary Handle
2. Bolt

SPEED CONTROL BUTTON



1. Speed Control Knob

Note: The figure should be roughly aligned with the triangular pointer in the middle.

- The required speed can be preselected with the selector in 6 different steps (500, 1000, 1500, 2000, 2500, and 3000). Figure 500, 1000, and 1500 belong to low speed and the indicator light are green; 2000, 2500, and 3000 belong to high speed. So the speed can be changed by turning the speed control knob to the specified value within the range of 500 to 3000, and the user can adjust the knob to select the appropriate speed according to the accessories used or the actual work requirements.

MAINTENANCE & SERVICE INTERVALS

- **Clean the air vents** The air inlet and air outlet of the tool should be cleaned regularly or at any time when it is blocked.
- **Dust Cover** Check the mounting screws. Should always check whether mounting screw fastening safely. If found loose screws, shall be immediately to tighten, so as to avoid an accident.
- **Avoid harmful substances:** Do not use petrol, diesel, benzene, thinner, alcohol, or similar substances for cleaning. These chemicals can cause discoloration, deformation, or cracks in the tool's materials. Wipe clean as needed. Use mild upholstery cleaner (not caustic) to clean as needed.

NOTE:

- **Authorized repairs only:** To ensure product safety and reliability, all repairs, maintenance, or adjustments should be performed exclusively by Adendorff Machinery Mart Authorized Service Centers.
- **Use genuine parts:** Always use Adendorff Machinery Mart-approved replacement parts to maintain the tool's performance and warranty coverage.

STORAGE INSTRUCTIONS

- **Keep the tool stored in a dry, level area**, away from dampness, moisture, and rainfall.
- **Allow the tool to cool down completely before storing.**
- **Ensure the tool is clean and dry before storage.**
- **Store the tool in a position where it cannot be accidentally stepped on or moved, especially to reach higher items.**

DO NOT:

- **Do not store the tool near an ignition source, such as a wood stove, gas or electric heater, or any appliance with a pilot light.**
- **Do not stack heavy or other items on top of the tool during storage.**

IMPORTANT:

- **Store the tool out of reach of children or individuals unfamiliar with its operation.**
- **Avoid direct sunlight or extreme temperatures. Store the tool indoors or in a safe, frost-free area**

TROUBLESHOOTING

When troubleshooting electric and battery-operated tools, start by checking the power source ensure the battery is charged or the tool is properly plugged into a functional outlet. Inspect the power switch, fuses, and any reset buttons for signs of malfunction.

Look for visible damage to cords, connectors, or terminals, as these can interrupt the power flow.

If the tool still doesn't operate, remove any obstructions, clean the contacts, and verify that all safety features or interlocks are properly engaged.

For battery tools, try a different battery if available. If issues persist, seek professional servicing from an Adendorff Machinery Mart Authorized Service Centers to avoid further damage or safety hazards.

DISPOSAL GUIDELINES

When disposing of electric and battery-operated tools, always follow local regulations and environmental guidelines. Start by removing any batteries, as they require separate handling due to their hazardous materials—recycle them at designated battery recycling centers or collection points.

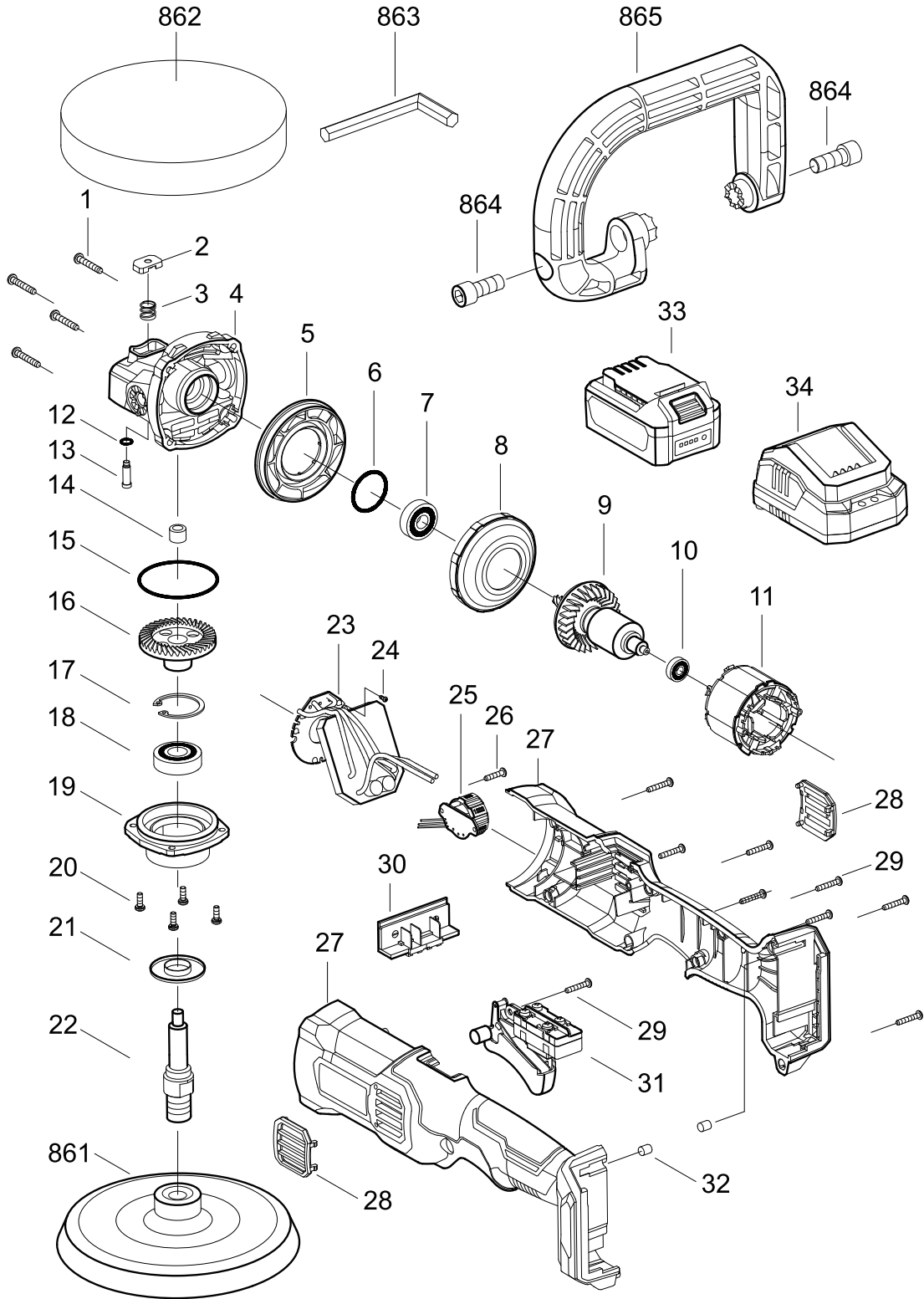
For the tool itself, do not throw it in regular trash; instead, take it to an authorized e-waste recycling facility or a community hazardous waste disposal event.

Always erase any personal data stored in smart tools and ensure components are safely handled to prevent environmental contamination or injury.

PARTS LIST & EXPLODED DIAGRAMS

DESCRIPTION	
1	Cross Recessed Pan Head Tapping Screw (ST4.2×25 25)
2	Pin Cap
3	Reset Spring
4	Gear Housing
5	Air Director
6	O Ring (26×2)
7	Ball Bearing 625E-2RS
8	Baffle Plate
9	Armature
10	Ball Bearing 629-2RS
11	Stator
12	O Ring (4.5×1.3)
13	Lock Pin
14	Needle Bearing HK0709
15	O Ring (47.5×2)
16	Gear
17	Retaining Ring For Hole32
18	Ball Bearing 6201VV
19	Gear Housing Cover
20	Cross Recessed Pan Head Tapping Screw M4×16
21	Dust Washer
22	Drive Spindle
23	PCB Control Panel Assembly
24	Cross Recessed Pan Head Tapping Screw ST2.2x6
25	Speed Controller

26	Cross Recessed Pan Head Tapping Screw ST2.9×9
27	Motor Housing Assembly
28	Dust Cover
29	Cross Recessed Pan Head Tapping Screw ST3.5×20
30	Terminal
31	Switch (20V)
32	Rubber Pin (6×8.1)
33	20V Battery Pack
34	20V Battery Charger Assembly
861	Self-Adhesive Disc
862	Sponge Disc
863	Wrench 8
864	Hex Socket Cap Screw M10×25
865	Auxiliary Handle
T1	Gear Housing Assembly (Including Parts 2-4 12-14)
T2	Locking Assembly (Including Parts 2 3 12 13)
T3	Gear Housing Cover Assembly (Including Parts 15-19 21 22)



CUSTOMER SUPPORT – REPAIRS & WARRANTY

A “CARRY-IN” CONDITIONAL WARRANTY APPLIES ON ALL GOODS PURCHASED.

WARRANTY PERIOD

- This product is warranted for 12 months from the date of purchase by the first user.

COVERAGE

- The warranty covers all material or production flaws, with exceptions:
 - Batteries and chargers
 - Parts subject to normal wear (e.g., bearings, brushes, cables, plugs)
 - Accessories (e.g., drill bits, saw blades)

EXCLUSIONS

- The warranty does not cover damage or defects from:
 - Maltreatment, accidents, or alterations
 - Inappropriate or negligent use of the tool
 - Overloading, fluid permeation, excessive dust, or intentional damage
 - Non-compliance with manual instructions, inexperienced assembly, lightning, or incorrect voltage

LIABILITY

- Adendorff Machinery Mart disclaims liability for bodily injury resulting from improper tool use.

REPAIRS

- All Warranty repairs must be conducted by an authorized Adendorff Machinery Mart repair center. All stores have in-house service technicians.

TRANSPORTATION COSTS

- Transportation costs for service are the customer’s responsibility unless otherwise agreed in writing.

WARRANTY CLAIMS

- All Warranty claims do not extend or restart the warranty period.
- Claims may be rejected if purchase cannot be verified or if product maintenance is found to be lacking.
- A 3-month (Three Months) warranty applies to any repairs performed.
- Cross Border customers, **PLEASE NOTE** that our warranty only applies to items purchased and used within the Republic of South Africa. Any items exported which are found to be faulty must be returned to Adendorff Machinery Mart at your own cost.

MAINTENANCE AND PROOF OF PURCHASE

- Maintain the product as instructed (e.g., clean ventilation slots, service carbon brushes regularly).
- Retain the purchase receipt as proof of purchase date.

SERVICE & REPAIR CONTACT INSTRUCTIONS

RETURN CONDITIONS

- Return the product intact, in clean condition, and in its original blow-molded case (if applicable), along with proof of purchase.

1. LOCATE YOUR NEAREST BRANCH

Visit our website at www.adendorff.co.za and use the Store Locator to find the nearest branch to you.

2. PREPARE PRODUCT DETAILS

Before contacting or visiting a branch, please have the following information ready:

- Product name and model number
- Proof of purchase (invoice or receipt)
- A brief description of the issue or fault

3. CONTACT OR VISIT THE BRANCH

Phone: Call your nearest Adendorff Machinery Mart branch directly for repair intake or service queries.

In Person: Bring the product to the branch for assessment. Ensure it is clean and safely packed for transport.

4. WARRANTY REPAIRS

If your item is still under warranty, repairs will be handled according to the warranty terms. Ensure you bring the original receipt with the product.

5. OUT-OF-WARRANTY REPAIRS

For items no longer under warranty, a quotation will be provided for approval before any work begins.

Note: Repairs may take several business days depending on parts availability and workshop load. You will be contacted once your item is ready for collection.

For full warranty details, visit www.adendorff.co.za. For assistance, contact the national call centre at 011 434 7000.



SUPPLIED BY



www.adendorff.co.za