

Model: G-JACKM002

# 560KGS HYDRAULIC MOTORCYCLE LIFT

## ORIGINAL OPERATING INSTRUCTIONS



SUPPLIED BY

**Adendorff**  
machinery mart

[www.adendorff.co.za](http://www.adendorff.co.za)



Model: GJACKM002

# 560KGS HYDRAULIC MOTORCYCLE LIFT

**Welcome to the Adendorff family!**

We're delighted to have you with us and thank you for choosing our product. Your trust and support are greatly appreciated, and we are confident that this device will serve you well.

Please read this manual carefully before installation and use. It contains important safety information and operating instructions that must be followed to ensure proper and safe operation. Keep this manual for future reference.

Taking the time to familiarise yourself with the product will help you maximise its performance and ensure a smooth, trouble-free experience.

If you have any questions or require assistance, please don't hesitate to contact our support team.

## PRODUCT INTRODUCTION

The MAC AFRIC 560 kg Hydraulic Motorcycle Lift is designed for the maintenance, repair of small- and medium-displacement motorcycles.

It features a standard front-wheel clamp with adjustable sizing, suitable for most motorcycle tyres.

- Maximum lifting height: 76 cm
- Safe working capacity: 560 kg
- Platform length: 180 cm
- Platform width: 56 cm

## SAFETY WARNINGS

1. Check for oil leakage before use.
2. Never exceed the ramps' specified lifting capacity.
3. Inspect the ramps for damage or defects before every use.
4. Always position the ramps on a stable, horizontal surface.
5. Adjust the clamping jaw width according to the tyre size.
6. Securely insert the safety pin after lifting is complete.
7. Pull out the pin and lower the lifting platform slowly. Be careful to stay clear of the scissor lifting mechanism to avoid hand injuries.

Model: GJACKM002

# 560KGS HYDRAULIC MOTORCYCLE LIFT

## ASSEMBLY



1. Check the accessories and get ready for assembly



2. Install the caster and extension leg



3. Insert the bottom safety pin



4. Install the front wheels



5. Insert the long safety pin



6. Install the ramp



7. Install the baffle plate



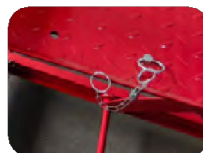
8. Install the right plate



9. Install the left plate



10. Install the hand wheel



11. Insert the safety pin



12. Finish

# 560KGS HYDRAULIC MOTORCYCLE LIFT

## OPERATING INSTRUCTIONS

### LIFTING

1. Rotate the handwheel to adjust the clamping jaw width according to the tyre size.
2. Repeatedly step on the lift foot pedal to lifting the lift.
4. After lifting is complete, use the safty pin to lock the lift.



### LOWER

**NOTE!** Always lower the lift slowly.

- 1). Remove the safety pin.
- 2). Step on the drop foot pedal to lower the lift slowly.



### CAUTION!

Be careful to stay clear of the scissor lifting mechanism to avoid hand injuries.



## TROUBLESHOOTING

No.	Issue	Possible Cause	Solution
1	Abnormal noise occurs at component joints during product operation	Insufficient lubricating oil	Apply lubricating oil between the parts
2	Fails to lift	Air may be trapped in the oil pump.	Open the oil plug to release air.
3	Can't reach the specified lifting height	Inadequate oil; Air may be trapped in the oil pump.	Add enough oil; Open the oil plug to release air.
4	Oil leaks from the oil plug	Too much oil	Check the oil level and drain any excess oil.

# 560KGS HYDRAULIC MOTORCYCLE LIFT

## MAINTENANCE

### 1. Fill with oil



1). Find the oil plug



2). Remove the oil plug



3). Fill with hydraulic oil (NO.15 Hydraulic Oil)



4). Put the oil plug back

### 2. Venting the system

Sometimes air bubbles remain inside the piston, which leads to a reduction in the effect and the pistons lifting unevenly. Please release air as below way:

- 1). Open the oil plug, one foot steps on the drop foot pedal constantly and another foot steps on the lift foot pedal repeatedly at the same time.
- 2). Put the oil plug back.
- 3). If lifting still fails, repeat the steps.



1). Open the oil plug



2). One foot steps on the drop foot pedal constantly and another foot steps on the lift foot pedal repeatedly at the same time.



3). Put the oil plug back

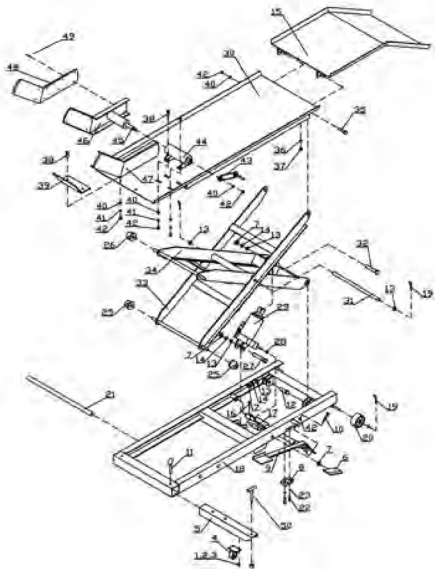
### 3. Rust protection

- 1). After operating pls lower the lift and make sure that the lift is in the bottom position.
- 2). Avoid contact with moisture. If the lift gets wet, wipe it off and lubricate all parts.

Model: GJACKM002

# 560KGS HYDRAULIC MOTORCYCLE LIFT

## PARTS LIST&EXPLODED DIAGRAM



PART	DESCRIPTION	QTY
1	M6 x 16 Bolts	8
2	Ø6 Washers	8
3	M6 Nuts	8
4	Caster	2
5	Extension leg	2
6	Drop Foot Pedal	1
7	M16 Nuts	5
8	Half Plate	1
9	Lift Foot Pedal	1
10	M10 x 50 Bolt	1
11	Pin	2
12	M16 x 50 Bolts	2
13	Ø16 Washers	4
14	Ø16 Spring Washers	4
15	Ramp	1
16	M8 x 12 Bolts	2
17	Release Valve Spindle	1
18	Base Assembly	1
19	Openings Pin	4
20	Front Wheel	2
21	Pipe	1
22	M8 x 35 Bolts	2
23	Ø8 Spring Washers	2
24	Ø12 Washers	2
25	Steel Wheel (Big)	2
26	Steel Wheel (Small)	2
27	M16 x 90 Bolt	1
28	Spring	1
29	Pump	1
30	Platform	1
31	Long Pin	1
32	M16 x 80 Bolt	1
33	Lifting Arm (Outer)	1
34	Lifting Arm (Inside)	1
35	M12 x 40 Bolts	2
36	Ø12 Spring Washers	2
37	M12 Nuts	2
38	M10 x 25 Bolts	10
39	Baffle Plate	1
40	Ø10 Washers	10
41	Ø10 Spring Washers	10
42	M10 Nuts	11
43	Hand Wheel	1
44	Fixed Rack	1
45	Bolt	1
46	Right Plate	1
47	Left Plate	1
48	Rubber	2
49	M6x16 Bolts	10
50	Adjusting Screw	2

# 560KGS HYDRAULIC MOTORCYCLE LIFT

## WARRANTY

### WARRANTY TERMS AND CONDITIONS

#### Warranty Period

This product is warranted for 12 months from the date of purchase by the first user.

#### Coverage

The warranty covers all material or production flaws, with the following exceptions:

- Batteries and chargers
- Parts subject to normal wear (e.g. bearings, brushes, cables, plugs)
- Accessories (e.g. drills, drill bits, saw blades)

#### Exclusions

The warranty does not cover damage or defects resulting from:

- Maltreatment, accidents, or alterations
- Inappropriate or negligent use of the tool
- Overloading, fluid permeation, excessive dust, or intentional damage
- Non-compliance with manual instructions, incorrect assembly, lightning strikes, or incorrect voltage

#### Liability

Adendorff Machinery Mart disclaims liability for bodily injury resulting from improper use of the tool.

#### Repairs

Warranty repairs must be conducted by an authorised Adendorff Machinery Mart repair centre.

All stores have in-house service technicians.

#### Transportation Costs

Transportation costs for service are the customer's responsibility unless otherwise agreed in writing.

#### Warranty Claims

Warranty claims do not extend or restart the warranty period.

Claims may be rejected if the purchase cannot be verified or if product maintenance is found lacking.

A 3-month warranty applies to any repairs performed.

#### Maintenance and Proof of Purchase

Maintain the product as instructed (e.g. clean ventilation slots, service carbon brushes).

Retain your purchase receipt as proof of the purchase date.

#### Return Conditions

Return the product intact, in clean condition, and in its original blow-moulded case (if applicable), along with proof of purchase.

For full warranty details, visit [www.adendorff.co.za](http://www.adendorff.co.za). For assistance, contact the national call centre at 011 434 7000.

**DANGER! Read all safety regulations and instructions.  
Keep all safety regulations and instructions in a safe  
place for future use.**

SUPPLIED BY

**Adendorff**  
*machinery mart*

[www.adendorff.co.za](http://www.adendorff.co.za)



SUPPLIED BY  
ADENDORFF MACHINERY MART  
98 SAILOR MALAN AVENUE, AEROTON  
JHB, 2190  
[WWW.ADENDORFF.CO.ZA](http://WWW.ADENDORFF.CO.ZA)  
MADE IN P.R.C.